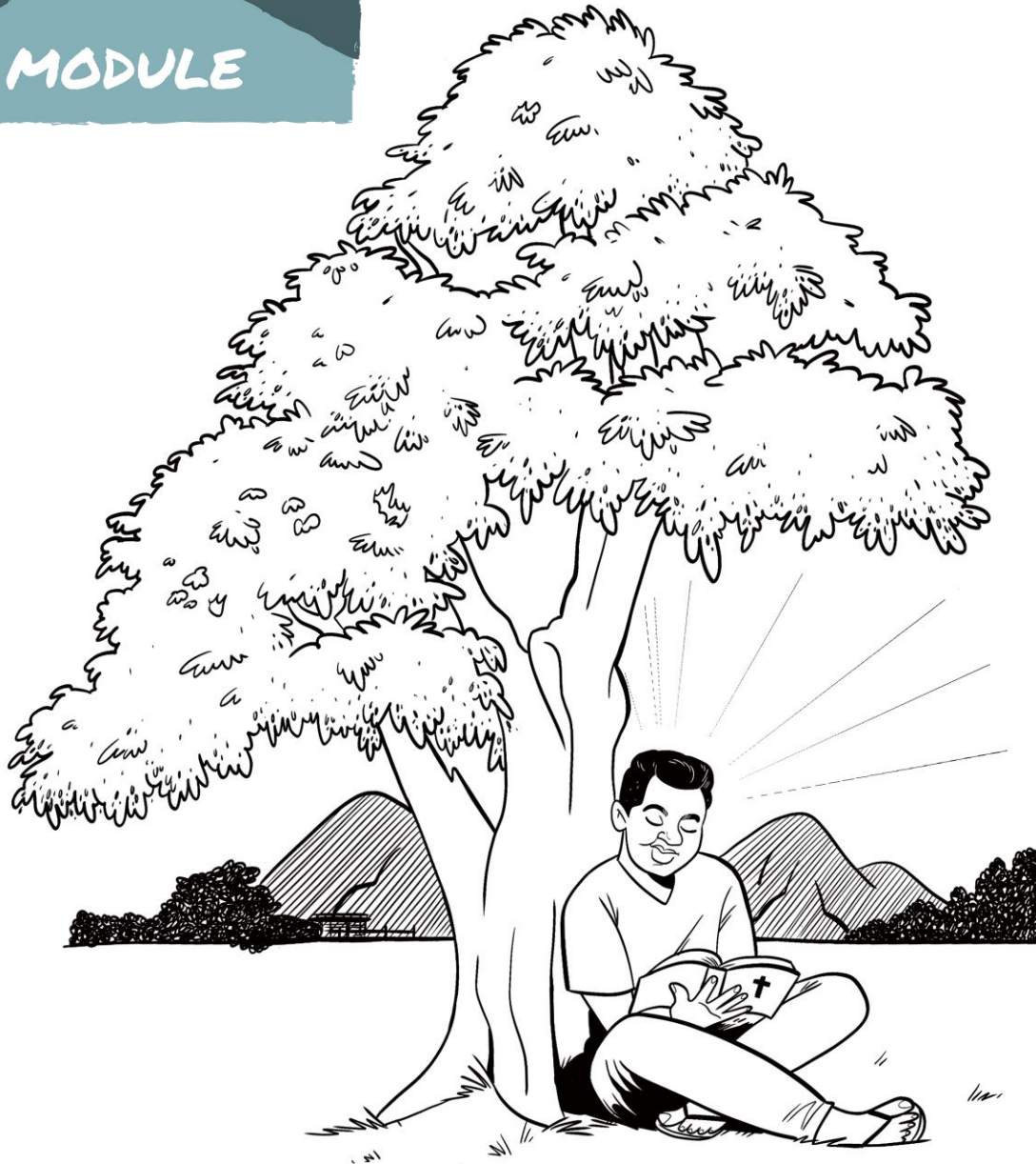


TRUTH CENTERED TRANSFORMATION

MODULE



KWO KIT MA LUBANGA MITO CAL ME ANYUTA

Jami matye I buki

Pwonye me 1: tuku ikom layeyo manyen (rud pote acel ka ingol ipok marom)

Pwonye me 4: Puzzle Game (rud dule acel pi dul ki acel acel – rud nyime ki ngeye ki nama me tuku ine ye lakucel ki wang jiri tungcel i karatac me tuku. Ka dong inol pot karatac enoni aror arot (calo puzzle) ka dong imii dul acel acel bot dul ki acel acel)

Pwonye me 4: Cik me aluba me tuku Puzzle (rud acel bot dul ki acel acel)

Pwonye me 5: Karatac ma nyuto wat (karatac 4)

Pwonye me 6: Carolok ikom talanta. Tuku me carolok man (rud gin 5)

Pwonye 6: Tuku pa Daudi gin ki Goliac (rud gin 5)

Pwonye me 8: karatac me goba pa Catan (dul acel acel me karatac 8)

Pwonye 1: Tku Pa Layeyo Manyen

(joo mudyere 2. Ngun iye 2 me miyo acel acel bot ngat ki acel acel.)

Layeyo macon: man madong in idoko layeyo myero dong ilegi, kwan Baibul nino ducu, wot I kanica, ki dong dony idul mo me kwano Baibul kicel I cabit acel. Myero dong iwek mato kongo ki taa

Layeyo manyen: jami ne dong dwong doo! An onongo atamoni myeo aye keken ki alegi ci nongo dong alare. Enoni aye gin ma in iwaco wii atii!

Layeyo macon: kakare , ento myero in dong itim jami mukeneni weng bene.

Layeyo manyen: pingo ?an dong atamoni alare. An amito ceto I polo, an pe amito loko kit ma akwo kwede.

Layeyo macon: man madong in idoko layeyo myero dong ilegi, kwan Baibul nino ducu, wot I kanica, ki dong dony idul mo me kwano Baibul kicel I cabit acel. Myero dong iwek mato kongo ki taa

Layeyo manyen: jami ne dong dwong doo! An onongo atamoni myeo aye keken ki alegi ci nongo dong alare. Enoni aye gin ma in iwaco wii atii!

Layeyo macon: kakare , ento myero in dong itim jami mukeneni weng bene.

Layeyo manyen: pingo ?an dong atamoni alare. An amito ceto I polo, an pe amito loko kit ma akwo kwede.

51	41	33	21	11	1
53	43	33	23	13	3
55	45	35	25	15	5

“ka joona ma kilwongo gin ki
nyinga omwole piny, ma gulego kun
giyenyo wanga kun giloke ki itimgi
maraco, ci abiwinyo ki ipolo ci
abitimo botgi kica ikom balgi ki
acango lobogi.”

Pwonye me 4: Cik Me Aluba Pi Tuku Puzzle

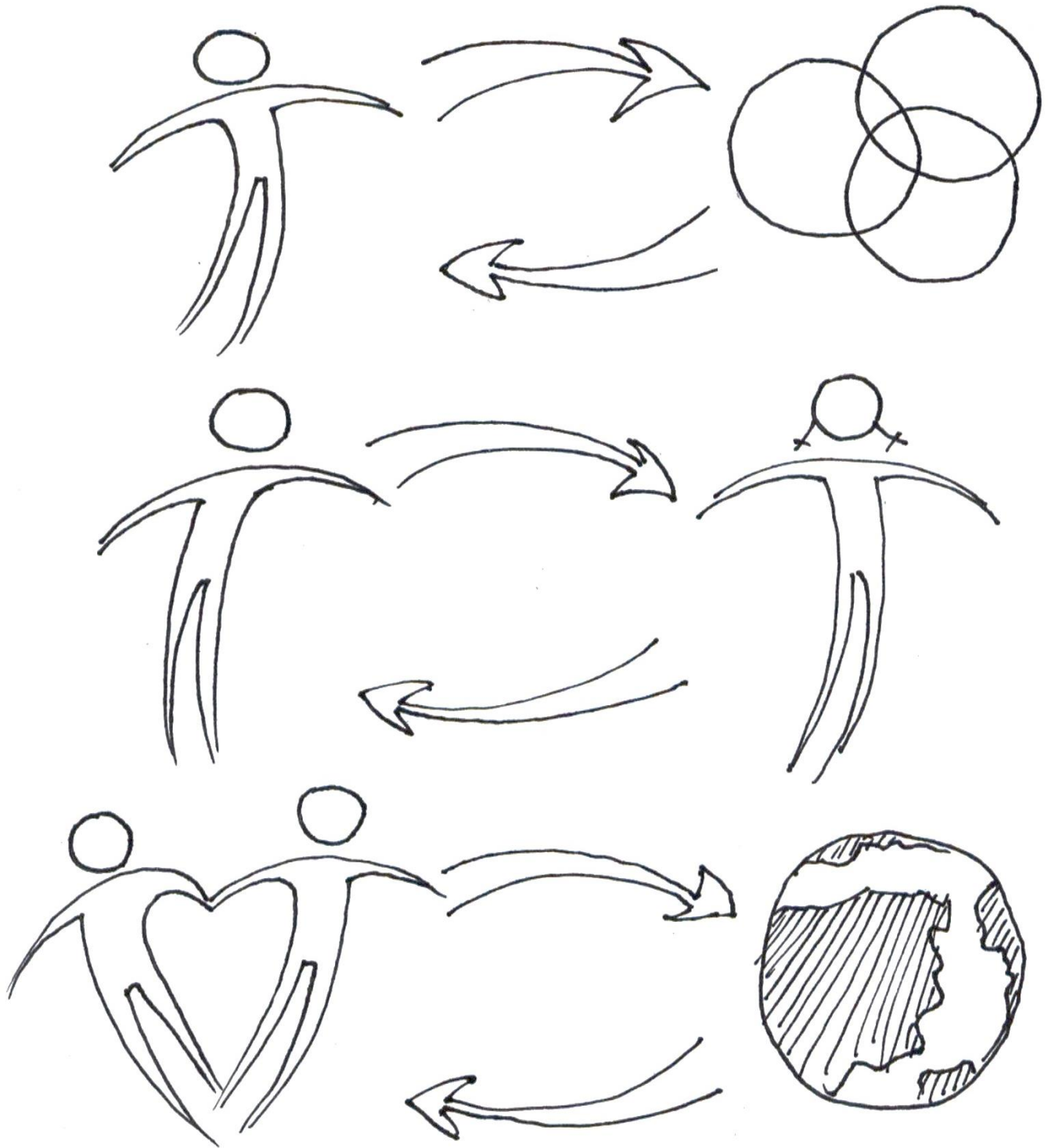
Ket karatac ma coc tye l dyereni ki acel acel wek onyut coc kamaleng. Ket coci malubo kit kwayi cal matye pinyi.

1	11	21	31	41	51
3	13	23	33	43	53
5	15	25	35	45	55

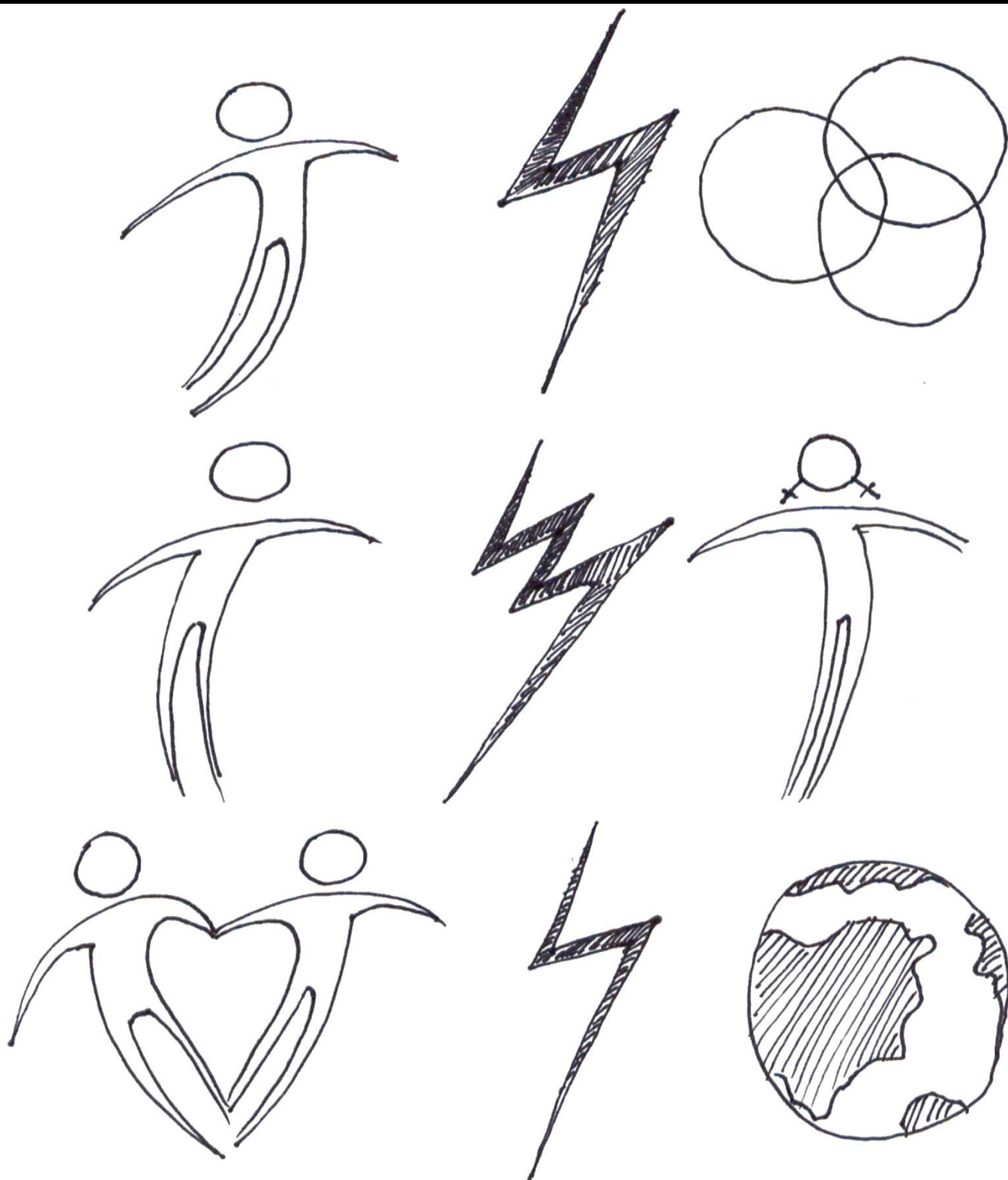
Ket dok odoco - dong obinen kuman.

Ka joona ma kilwongo gin ki nyinga omwole piny , ma gulego kun giyenyo wanga ma guloke ki ibal mamegi maraconi, ci abiwinyo gin ki polo kun atimo kica pi balgi ka dok acango lobogi.

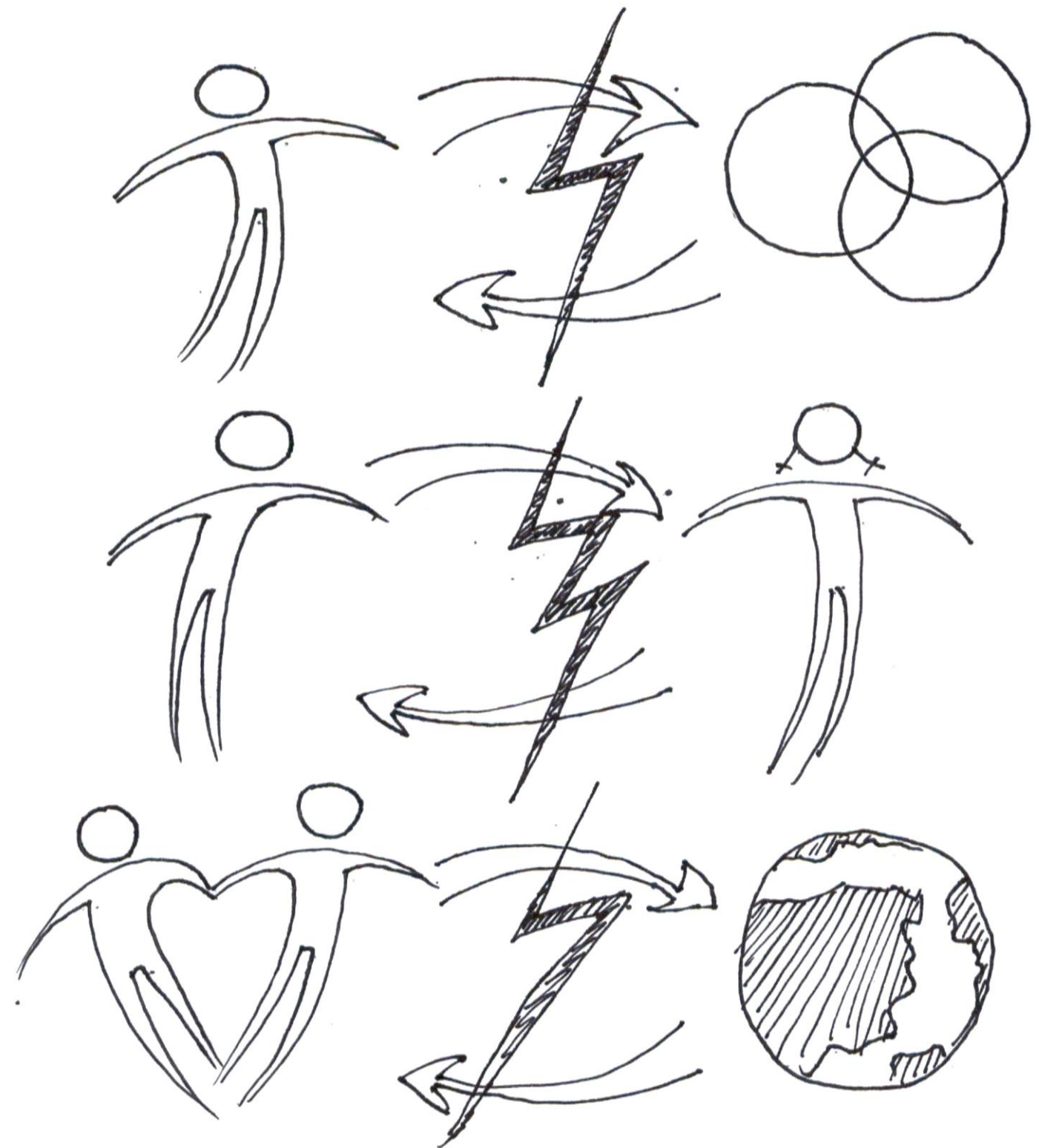
Cal me 1: Cwec



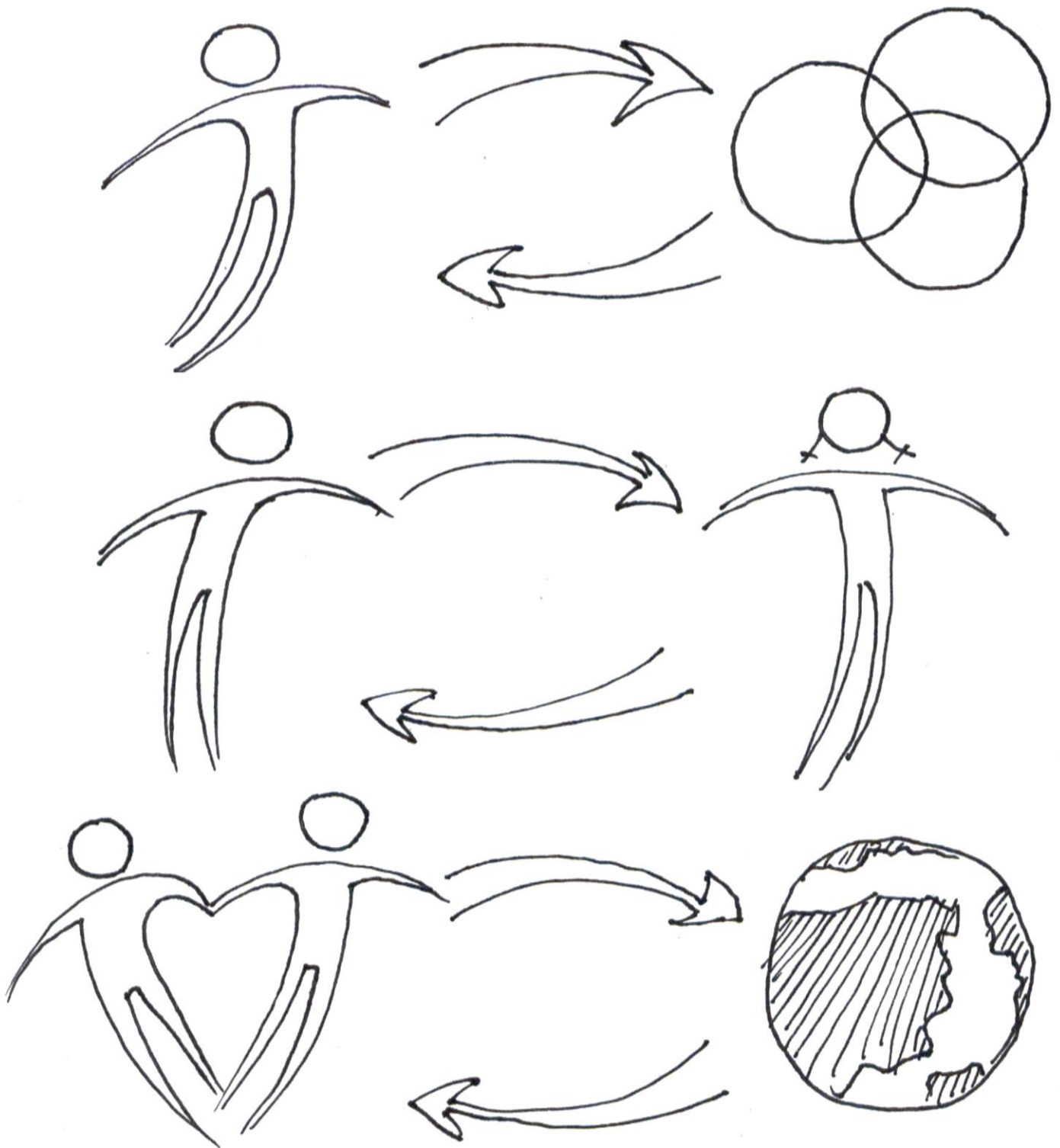
Cal me 2: kit ma dano



Picture 3: Roco wat ma



Cal me 4: Dwogo pa Rwot



Pwonye me 6: Tuku ikom Carolok me Talanta

(jenge ikom Matayo 25:14-30)

Joo mudyere 5 - Ladit, Latic me 1, Latic me 2, Latic me 3, Lakwan ododo

- Ladit tic:** lutic obin kany kun owiny lok man. An acok ceto ka wot me tiyo tica. Tye im maromo talanta 5 ma amini me gwokone (*mii talanta 5 bot latic me 1*)..
..talanta 2 bot in (*mii talanta 2 bot latic me 2*)..
...ki dok talanta 1 boti (*mii talanta 1 bot latic me 3*).
Odong maber.
- Latic me 1:** ber tutwal, man lim madwong. myero atii kwede maber (*ci woto ceto cen*).
- Latic me 2:** myero atii ki lim man maber. laditi kite tek tutwal (*woto ceto*).
- Latic me 3:** ayi doo, ngo ma oobitime ka lim man orweny woko –kwona obitumu , kuu kong! Angeyo ni abikwinyo ngom ci akano man woko piny. (*woto ceto woko*)
- Lawac ododo:** *inge kare malac*, ladit tic odwogo ki itice ci olwongo lutic ki acel acel me nyutu kit ma gin gutiyo kwede ki lim.
- Latic me 1:** ladit , in imiyo bota talena 5, an dok anyayo 5 mukene (*miyo talanta 10*).
- Lait tic:** apwoyo tic matek, latic malagen. In ibedo lagen ikom gin manok ma amiyo boti; dong abimiyo madwong dok boti. Dony iyomcwiny pa abani.
- Latic me 2:** ladit , in imiyo bota lim 2;gin en , an dok anyayo 2 mukene amedo ikome. (En miyo 4).
- Ladit tic:** ber tutwal, itiyo maber latic malagen. In ibedo lagen igin manok; abimiyo madwong dok boti , dony iyomcwiny pa abana .
- Latic me 3:** ladit ,an angeyoni in ladit makiti tek, pe ikayo kama pe icoyo, ki dong pe icoko kama pe icoyo kodi ni iye. An onongo abedo ger matek, an aceto akano talanta na ingom. Ene, gam giri. (miyo talanta1).
- Ladit :** latic ma kit erac, in ingeyo ni akayo kama pe acoyo dok pe acoko kama pe apito iye kodi? Ci onongo dongmyero iket lima bot weg benge , kid ok wek ka abino agamo gin mamega ki magobane. lumony! Kwany talanta ni ki bote ci imii ki latic matye ki talanta 10 ni. Pien ngat acel acel matye kwede mabup kibimiyo bote ki dong bibedo ki madwonge. Ento ki bot ngat ma peke kwede, wa ma en tye kwede kibikwanyone ki bote. Ki dong obol latic makonye peeke ni imac kama kibikayo iye lak ki koko malit.

Pwonye me 6: Tuku pa Daudi gin ki Goliac

(jenge ikom 1 Cammuel 17:1-54)

Joo mudyere 5 – Daudi, Omekiner, Lamony, Caul, Goliac

Daudi: Amoto wun omegina! An atye kakelo cam ma wonwa oyubu pi wun. Lweny tye k wot nining?

Omine : tye dano moo matek ma nyinge Goliac. Nino ducu en bino yelo wan ento ngat moo ma yile me lweny ikome peke. En dit tutwal! Kabaka owaci ibimiyo mot madit bot ngat ma olweny ikome.

Daudi: anga ma mony pa Lubanga makwo bene lworoni? Myero walyeny ikome pien Lubanga wa obikonyo wan!

Omine : *(okeco)* in ibedo anga me waco lok makit meno? In ibedo awobi matidi matye ka gwoko romi, ci dong itamoni in piritek tutwal.

Lamony : Daudi, owoto odok tung cel. Wan wawinyo gin ma iwaco ikom Goliac ci dong kabaka Caul mito neni.

Daudi : kabaka mito nena? An latin mamwa.

(owoto me ceto ka rwate ki Caul)

Daudi: *(loko ki Caul)* in pe ibed ki lwooro ikom lapiliciti. An abiceto ci alweny ikome.

Caul : in pe itwero ceto ka lweny ikome. In pwod itidi ki en obedo lalweny wa ikare me bulone.

Daudi: latici eni obedo lagwok romi ki ka inen nguu obino ma omako lotion romi, an aringo ikore amako dok paka alaro lotion romi pa wora woko ki idoge. Ki ka oyile ikoma an amako en ki yee tike ci abole piny ka dok aneke bene. Latici dong oneko nguu wa ki kwac bene, ki dong lapiliciti ma pe kilironi obibedo ngat5 acel ikingi, pien en opyedo dul mony pa en mamalo twali. Lubanga ma olara ki icing nguu ki kwaci bene obilara ki icing lapiliciti man.”

Caul: cti, Lubanag obed kwedi. En ruk jami me lwenya, ruk ikomi.

Daudi: *(teme me ruku jami lweny ki dong poo bedo okwan.) ruk man dit dok pek bene, an pe aromo rukune pien pe angiyo kwede. (poo lunyu jami me lwenyi ki dong poo kule me coko lagweng ki ingom. Kat woko kalweny ki Goliac.)*

Omine : ngo ma tye ka time kany?nen kong , latin awobi matidi eni tye ka timo ginango? En laming tutwal. Pacocowa lewic bimako pien!

Goliac *(oneno daudi)* an abedo gwok ma ibino ikoma ki odo ni? Bin bota ci abimini ringo komi bot winyi me polo ki anyangi me lobo.

Daudi: in ibino ikoma ki tong ki jami me lwenyi. Ento an abino ikomi ki inying Lubanga me mony, Lubanga me mony pa lcreal, ma in ipyedo nyinge ni. Inino man Lubanga obimiyo icinga ci aceli ipoto piny ki abingunu wiya.. ki an bimiyo komi ma oto bot lutuu lupiliciti ki tini bot winyi ki anyangi me lobo, wek lobo lung ongee ni Lubanga tye l icreal, wek lwake weng ongee ni Lubanag pe laro ki tong kin atero. Pien lwenyi pa Rwot ki en obimiyo in icinga”

Goliac: *(ook bot Daudi ci oyube me celone .)*

Daudi: *(otime calo wiro latangdingo ci obol calo cello Goliac)*

Goliac: *(otime calo kicele ci opot piny calo otoo)*

Daudi *(rorune oceto ka ongunu wii Goliac.)*

Caul, Omine ki Lamony: *(odongo oduru)* Lubanag omiyo botwa bedo agonya!

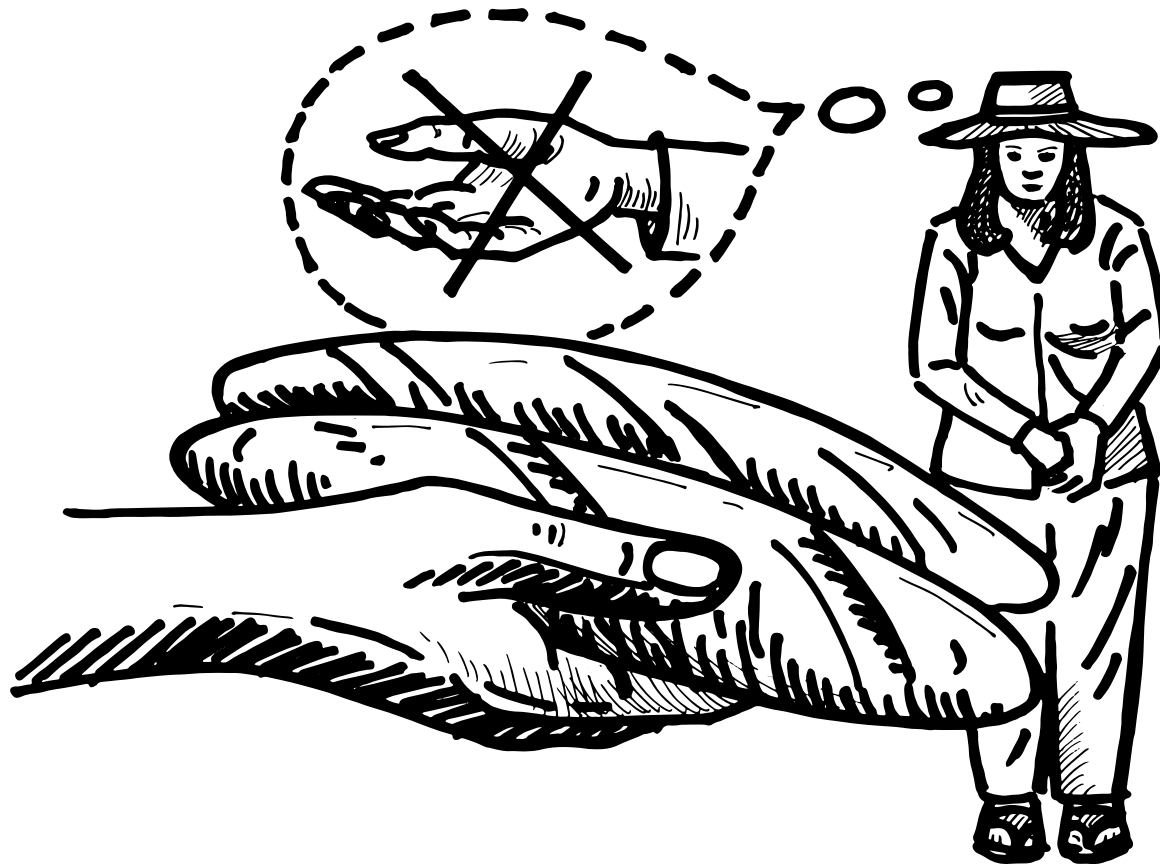
**Tic obedo acena kid ok tek mada.
Myero itii matidi moo katwere.**



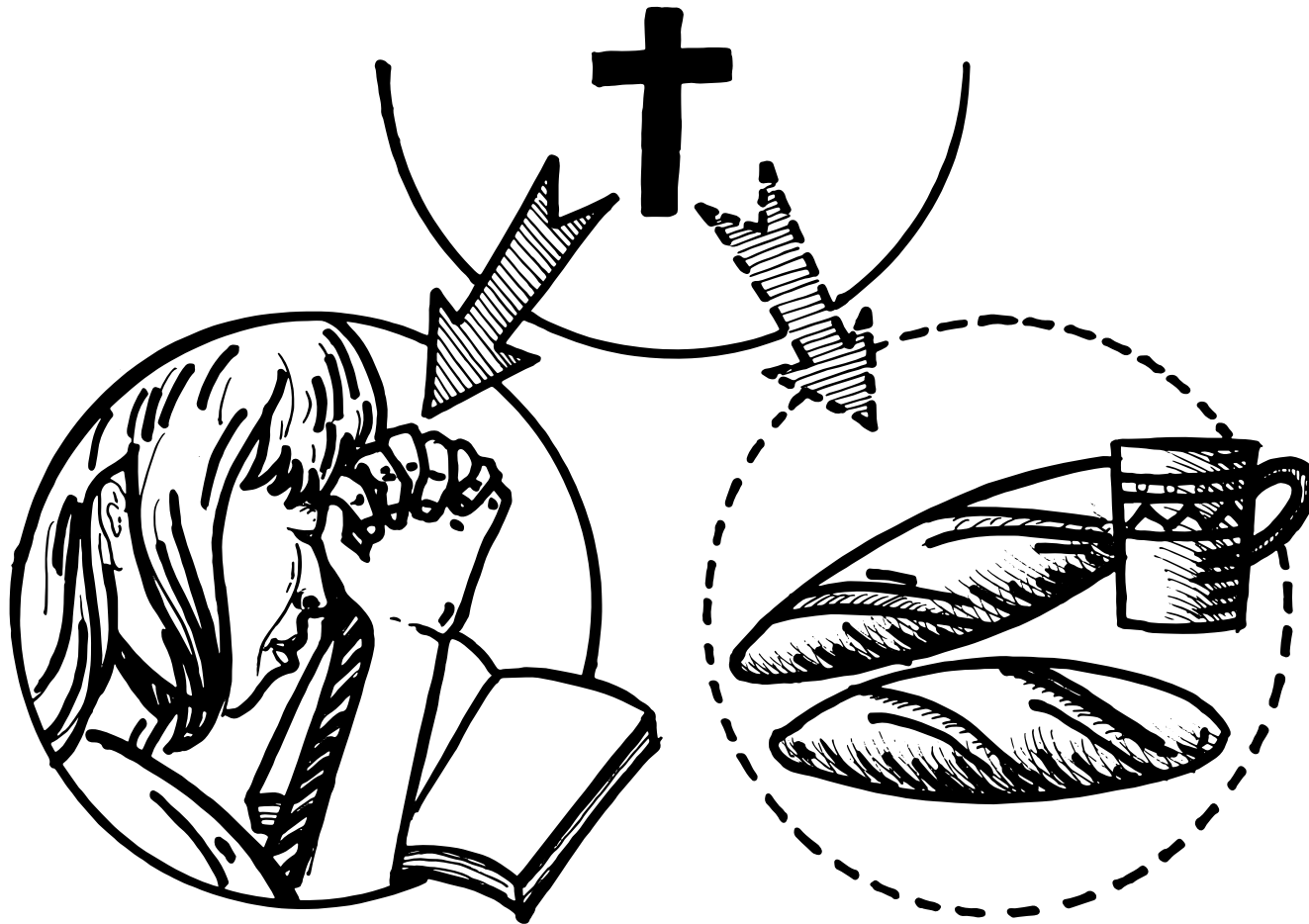
**Wan kinywalo wan lucan dok bene
wabi too ican.**



**Wan lucan ma pe watwero miyo ki
joo mukene. Joo mukene aye
myero omini wan jami.**



**Lubanga paro pi kwo me
cwiny keken.**



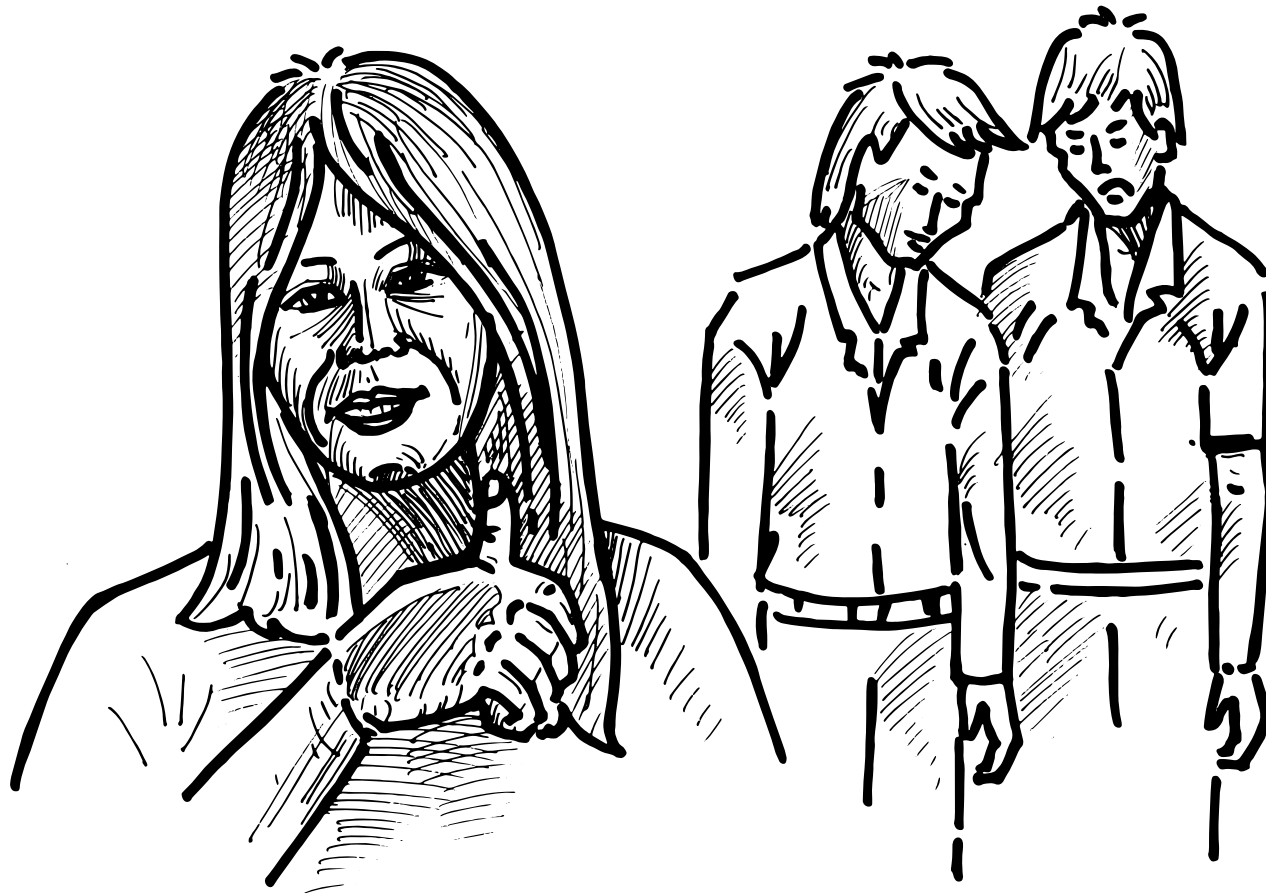
**Lubanga mitini wan watuc jiri bot joo
ma ingetwa kiken dok pe paroni
wamii ki gin jami ma orem.**



**Wan pe watwero loko kwowa ki ka pe
wanongo lim ki bot joo mukene.**



**Joo mukene pigi tek loyo joo
mukene . wan piwa pe tek.**



**Lok me jiri gudo kwowa me cwiny
keken.**

