

**TRUTH
CENTERED
TRANSFORMATION**

MODULE 3



**KUMVWISISISYA SIMPE LYA LEZA
AMANWA A SAATANI**

Bbuku Iya Muiisyyi

Bbuku lyatatu lya Nkamu ya Truth Centered Transformation –v3.1 liti kumvwisisiya Simpe lya Leza amanwa a Satani lilimunsi lyamulawu wa Copyright ©2012^[1]_{SEP} Reconciled World, yaku Phoenix, Arizona, ku United States of America. www.reconciledworld.org

Ooyu mulimu ulikujanika munsu lyamabambe a Creative Commons Attribution-ShareAlike 3.0 license. Ulazumizigwa kutola mulimu ooyu, kuupanga bwiingi, kuuwaba, akuubelesya kotobelazya eezi zitobela:

Kupa kulumba – welede kubikiliza aaya mabala aatobela mukulumba kwako: Copyright © 2012. Lyakadindwa aba Reconciled World (www.reconciledworld.org) munsu lyamialwu ya Creative Commons Attribution-ShareAlike 3.0 license. Kuyanda zyiingi, langa a www.creativecommons.org.

Tawuuzigwi pe – Tozumizigwi pe kuuzya mulimu ooyu naa kuubelesya munzila yakuchita bbizimusi.



Na koyanda kusandwida mulimu ooyu, wangunuka kulembela ku info@tctprogram.org.

Malembe aamu Bbayibbele woonse akatolwa kuzwa ku New International Version®, NIV®. Copyright ©1973, 1978, 1984, 2011 by Biblica, Inc.TM kalibeselegwa anzumizyo ya Zondervan, kunze kwakuti kakwaambidwe bumbi. Zyelelo zyoonse munyika yoonse nzya. www.zondervan.com The “NIV” and “New International Version” zyakalembesegwa ku United States Patent a Trademark Office by Biblica, Inc.TM

Zilimukati

Kotana Sanguna	1
Chiiyo chakusanguna -1: Tulikusandulwa na?.....	3
Manjiilo.....	3
Milawu ya Leza.....	4
Ndangemusule yabbuku lyakusanguna - 1.....	5
Kusandulwa kwa Fiji	6
Kulilingula.....	8
Chiiyo chabili: Tweelede kuba Balangizi baBulengwe.....	9
Manjililo	9
Lwaano.....	9
Chiiyo cha Bbayibbele.....	10
Bulyidilano Bubotu Azilengwa	11
Nchito zyaluyando.....	11
Chiiyo chatatu 3: Tulakonzya kusandula Iya Juunza	14
Ntalisyo	14
Kusandula zintu.....	15
Kuba muntu uyeta busandu.....	15
Masimpilo.....	19
Kulilingula aku Chita.....	19
Chiiyo chane - 4: Leza Wakatupa Zyiingi.....	20
Manjililo	20
Chiiyo cha Bbayibbele.....	20
Kuleka kujatilila kukulilizya kwesu.....	21
Tweelede Kusanguna Kubona Zyoonse Nzyatupede Leza.....	21
Balimi	22
Chiiyo 5: Satani Mubeji.....	23
Manjililo	23
Nguuli musyobo wamanwa Satani ngatubejela?	23
Niinzi cheetelezegwa amabejo aaya?.....	25
Nga tulagwisya biyeni manwa aaya?	26
Chiiyo chamusanu akamwi - 6: Kulanga Ziyandikana.....	27
Manjililo	27
Mpuli	27
Cheengele.....	28
Kukomezya mabambe.....	28

Kotana Sanguna

Kubambila Chiiyo chakuyiisya

1. Bala **bweendelezi** boonse bulangene amuyiisi oobotu oobotu, kuti kakukonzeka bala twiingi kolikwiindulula. Kwenga mpobwene kuti mpakoloondo nakulemba kumbali zimwi nzyobwene kuti nzikoloondo mubweendelezi oobu.
2. Langa **mpalamo** zyachiiyo eecho kuchitila kuti uzibe zyelede kuyiisigwa kubayiyi muchiiyo eecho.
3. Bala **malembe** amu bbayibbele saansi kotanasanguna.
4. Langa kuti nzezili **zyakubelesya** nzyonga ulayanda muchiiyo eecho. Bona kuti wachitila basikwiiya mabbuku ngibeelede kubala aayo ategwa ma *handout*, chita zigwasizya basikwiiya kabalikubona muchiindi chabo chakwiiya.
5. Bona kuti **zyiyo** zyoonse ulizizi (misobano yandeeene antoomwe azitondezyo zigwasya kwiiya). Ulakonzya kujana buzifundila abasimpuli nakuti abazolani bako.
6. Tola chiindi **chakukomba** kuti Leza ababambe kabotu bayiyi, kuti bayiyi bamvwe Leza nzyalikuyanda akuti Leza akugwasye mukuyiisya kwako. Yeeya kuti muumanguzu aaLeza amulikke munga mulapa kuti bantu basanduke.

Zintu zinga zilakugwasya kuti uzwidilile mukuyiisya kwako

1. Sika ubambe zintu zyako nzyotanobesye abusena mbotabelekele.
2. Utabi kochijana kuyanda kumana chiiyo. Bambila chiindi chakuzuwisyania chilamfu, misobano akulyookezya. Mpalamo njakuti bantu bamvwisisisye akuti babotelwe kuba muziyyi ezi. Njiisyo yako ibe yakuti nuwaya kuchibaka chitobela waziba kuti munti woonse wamvwisisisya zyoonse nzwaiisya musule. Zimwi ziiyo zilakonzya kutola lubo chimbi chimpanzi chazuba litobela nakuti zuba lyoonse lubo.
3. Kkala kochita ndangemusule. Kumatalikilo achiiyo chipya chita kuti basikwiiya boonse bachite ndangemusule yazintu nzibakayiya kale. Kwiindulula kugwasya kuti bantu tabalubi nzibakayiya.
4. Tobelesya bweendelezi bwamuyiisi antoomwe anzunoli walembe aansii mukubambila chiiyo.
5. Bona kuti wabikkiliza zimpanzi zine zyoonse zyachiiyo achimwi achimwi.
 - a. Zibisya mutwe wamakani – nchito zilaba nzizyo zitanjilane amutwe wamakani akujatana achiiyo chakiinda.
 - b. Pa njiisyo mpya – nzyiingi nzila zyakupa majwi mapya.
 - c. Pa basikwiiya nchito zyazimwi nzibakayiya kale – chito zigwasya kufwambaana kumwisisisya chiiyo kwiinda mukubelekela antoomwe abamwi, kakuli kupangwa kwanjiisyo mpya munzila zisiyene.
 - d. Jatania majwi aya abuumi bwabo – eyi ninzila yakuchita kuti basikwiiya bakonzye kuzibikka mubuumi bwabo nzibayiya.
Kwiiya kutakwe kubikka ziiyo mubuumi bwamuntu taakwe nikugwasya pe.
6. Chita ndangemusule ya ziiyo zyakayisigwa muchiindi kakuyisigwa kwabayiisi zya *Facilitator Development*.
 - a. Pa nzila zisalede zyabwendelezi
 - b. Buzya mibuzyo myiingi itayandi nsandulo yomwe pe
 - c. Lumba bantu akuza kwabo

- d. Utaambili bantu nzibatayiiye pe chilimbubo kulibonena
 - e. Sangunina alizimwi nzibazi kale bantu mpawo kolikulanga nzibakaswaanana aazyo
 - f. Baamoyo mulamfu kolikulinda kuti basandule
7. Kusungwaazya muntu woonse kuti ajatinkane muchiiyo, kwaabana mizeezo akuzuwisyania. Yandula nzila zyakusungwazya kujatinkana kwabantu balensoni zyakwambula alimwi eezi nzila tazyelede kubanyansya pe.
8. Komba zuba lyoonse kuchitila kuti Leza kali kukupa zimbi zintu zipya abasikwiiya bako.

Nzila zyakubelesya Bbuku Iyamu Yiisi eeli.

1. **Mpalamo azyakubelesya:** Achimwi achimwi chiiyo chisangunina aawa.
 - a. **Mpalamo** – basikwiiya belede kuzijana eezi kumamanino achiiyo. Chibotu kulibuzya mubuzyo wakuti mpalamo zyoonse yakazuzikizigwa na musule akuzulula kwako muchiiyo. Tola chiindi chakulangulula eezyo zipati nzimwalikwambuzyania atala anzizyo kuchitila kuti tazilubwi pe.
 - b. **Zyakubelesya** – zyoonse zyakubelesya ziyandikanda anga zililembedwe achiiyo achiiyo, ziswaanizya zigwasizya mukwiiya kaziboneka amabbuku abasikwiiya. Ulakonzya kusala kuchita mabbuku miingi abasikwiiya nakusala kuchita biyo mache mbuli mbuzilembedwe muchiiyo eecho. Tulasungwazya lubo kuba aabbodi yakulembela na koli ambunga yabantu mpati.
2. **Zyeelede kutobelezegwa amweendelezyi:** Mukati kazyiiyo omu muli nzila zinga zilakugwasya kuti uzulwide chiiyo kabotu. Eezi tazyelede pe kwabilwa kuli aabo balikwiiya. Kkala kozibalide eezi kuchitila kuti zikugwasye kweendelezya chiiyo. Imwi mibuzyo ilijisi nsandulo zyakukugwasya mbuli muyiisiyi kuti uzibe nzoyelede kulangila kulibasikwiiya. Eezi teensi nzizyo azilikke nsandulo ziluleme pesi nzimwi biyo zinga zilakugwasya kujana zimbi.
3. **Kulanga chiindi akukweendelezya chiiyo:** Chiindi tachibikidwe pe muzyiiyo.
 - a. Tola chiindi choonse cheelede kuchitila kuti bantu bayiiye bamvwisisisye chiiyo. Nchibotu kubona kuti bantu bali aanzibalikwiiya akujata pepe kuchijanina kumaninsya zyiiyo muchiindi chitalidwe.
 - b. Yeeya kusiya chiindi chakusanguna ankombyo, kwaabana bukamboni kuzuwisyania atala azimwi nzibanoli baswaanana aazyo akukomba antoomwe.

Chiiyo chakusanguna -1: Tulikusandulwana?

Mpalamo mpati

1. Kutobela milawu ya Leza kweeta buumi azilongezyo. Kutatobela milawu yakwe kweeta buchete.
2. Mbuli bana Kkilisito tweeleda kuti buumi bwesu kabuyabusanduka mukweenda kwesu katulemeka Leza.

Zyakubelesya

1. Zitondeezyo — maKkaadi ama Fiji (kkumi alimwi 11)
2. Mapepa Mapati ama crayon

Manjiilo

Zyakutobelezwa kuli sikuzulula: Bala twaano tutobela.

Lwaano lwakusanguna- 1: Rwanda

Rwanda ninyika niini iijisi bantu basika biyo bayinda buniini mamiliyoni musanu aatatu. Mumyaaka mwaanda yainda taakwe nikwakali bana Kkilisito pe, pesi kumatalikilo amyaaka yama 90 kwakali kwazula nsondo mumasena miingi munyika eeyi: Chimpanzi cha 85% chabantu bamu Rwanda bakali baba bana Kkilisito. Eezi zyakasanguna ambulizyo yabuvangeli yakasanguna munyika zyakubuzwezuba bwa Africa kumyaaka yama 1940 alimwi bantu biingi bakafutulwa. Mumwaaka wa 1991 a 1993 kwakaba miswaangano mipati yambulizyo yakagwasya kusanduka kwabantu biingi.

Kakuliboobo, mumweezi wa Mukubwekaangala awa Kaanda kaniini mumwaaka wa 1994 kwakaba kujiigwa kwabantu kwakagambya loko, kwaka jezya bantu bayinda miliyoni yomwe alimwi bayinda mamiliyoni aabili bakachija mu Rwanda. Kujezana ooku kwakali kweetelezegwa aakutamvwanana nkaambo kamilaka.

Kwakalikujayanwa bantu kabalangene atufulo, taakwe nikwakali kubelesegwa ntobolo pe na mabbomba.

Munyika iilabana Kkilisito basika 85%, bana Kkilisito bobile bakalikwiimilaka akujezana. Twaano twazintu ziyoosya azigambya, zyakalikuchitika tazisyomeki pe. Chalikuchitika kumvwa kuti banakazi bakalikuvumpilwa boonwa aabo mpawo bajiigwa kunembo lyabana babo, bamwi banakazi bakalikuvwikwa kabapona abana babo. Taakwe muntu naba omwe munyika wakalikusyoma kuti tubunga tobile twabana Kkilisto ngatulasulana oobu.

Lwaano lwabili- 2: USA

Munyika yoonse ya USA ulajana nsondo zisiyene. Ulakonzya kuswiilila wayilesi yabuna Kkilisto luzutu na kweebela chiipekupeku chichita biyo zyaabuna Kkilisito mumasena woonse biya ngonga ulaya. Muli zikolo, ma kkoleji ama yunivesiti abuna Kkilisito muzeengele zyiingi. Mabbuku achi Kkilisito ajanika nkuko takonzeki kumana kwaabala, magubi, mamagazine, mapepatwaambo azimwi zyiingi zyakubala zilembwa zyaabuna Kkilisito. Nikuliboobo, mu USA bana basika miliyoni achimpanzi balajiigwa amwaaka nkaambo kakugwisya mala. Chimpanzi chamichado imanina mukulekana. Myeelwe yoonse eeyi teensi jibatasyomi china Kkilisito abalike pe, pesi abana Kkilisito mubali mumyeelwe eeyi alimwi chigambya nchakuti ileelene myeelwe yabana Kkilisito abatali bana Kkilisito balikuchita eezi zintu.

Lwaano Iwatatu 3: Brazil

Mumbali amulonga Amazon kukkede bantu muzyeengele zilabuchete. Kuti usike kubusena oobo ubelesya bwaato biyo. Mumyaaka makumi aatatu yayinda taakwe nikwali bana Kkilisito pe bakazibinkene mukati kabusena oobo. Pesi muyaaka makumi aatatu bakambawusi bakayinka kababelesya maato mpawo bakakambawuka kubantu basanduka. Bakambawusi banoonga bakkala kwakayindi basiya bapanga nsondo mapwo baya kulichimbi cheengele. Lino kuti wayinka nkukooko, uyolila loko nkaambo zyeengele ezi zilabuchete. Muzyeengele eezi mpuli tazyiondojana chakulya pe. Inzila yomwe njibachita aayo mali muzyeengele ezi, kupeda bana babo basimbi kuti bakaamuke nibasika biyo myaaka kkumi ayibili na kkumi ayitatu. Bamawisi mbibapa bana babo kubantu bavubide mumasena aayo. Bamawisi bachina Kkilisito abalabo balachita nzizeezo zyakupeda baba babo bachisimbi kubwaamu – kuti bajane mali.



- Niinzi chakachitika mukaano kamwi akamwi?
- Tulagambya na twaano ootu nape? Nkaambo nzi?
- Uyeeya kuti Leza ulimvwa biyeni atwaano ootu? Nkaambo nzi?

Lwaano Iwane - 4: Cheengele chili Aakalundu

Kwakali gunzi lyakali aatala akalundu. Telyakali pati loko pe. Lyakali kubbasu lyabu chete bwanya eeyo alimwi bantu balikuliponena biyo. Tebakalikujana chakulya chizulila pe. Bakalikulinda biyo bwiime bwakunze kuti bazibe mwaaka ooyo kuti unoyimvwi biyeni - kulaba chakulya chizulila nape? Taakwe nibalikwe zimbuzi alimwi balikukkala biyo mumaanda atayakidwe kabotu. Bakalibantu bakatalikwe lukondo pe, bakalikubeleka chamanguzu mumyuunda amwaaka amwaaka.

Mumyaaka makumi aatatu yayinda, bakambawusi bakasika kubusena oobu babakambawukila aatala aKkilisito. Mukuswiilila akumvwisisiya kwabo, bakasanguna kusanduka alimwi biingi bakaba bana Kkilisito. Bakambawusi bakagwasyana abantu bamubusena oobo kusanguna nsondo. Bantu bakali kukkala kabayinka kunsondo. Bakalikubotelwa nkaambo bakamvwa kuti nibazoofwa bayooswaanana amulengi amufutuli wabo kujulu. Aboobo bakali kukkala kabalangila zuba eelyo.

Nibakeenda bakambawusi bakasiya nsondo kiizulwidwa abantu bamumoomo mubusena. Musule amyaaka makumi aatatu, bakambawusi bakaboola alimwi bakajana nsondo yakakomena bantu bachilipedeleda kuswaanana. Pesi gunzi eli mbulyakachibede. Bakachili bachete alimwi bakachili kulinda mwaaka kuti bazibe kuti balajana kulya nape. Taakwe nikwali kwaba zimbuzi, nziche loko zyakasandukide.

- Niinzi chakachitika mulwaano oolu?
- Lulagambya na lwaano oolu? Nkaambo nzi?
- Niinzi chikozyenie mulwaano oolu atumwi twaano?

Mulizimwi nzila oolu lwaano lulakonzya kutatugambya loko mbuli tumwi nkaambo eezi zili zibilikide. Pesi kalakozyana biyo atumwi twaano: nikuba kuti buna Kkilisito bwakaba aabasandukide pesi tebwakasandula buumi bwabo pe. Leza uyanda kuti buumi bwesu busanduke katuchili aanyika peepe kujulu akulike.

Milawu ya Leza

NJOOMO MUMBUNGA MPATI

Bala kuli Dut. 30:11-20.

- Leza wiipandulula biyeni milawu yakwe? Myuuba naakuti milemu?
- Mumunchali 15 nzezili nzitukozya kulisalila nzitupedwe? Ncheechili nchonga ulasala?

- Niinzi cheeta buumi azilongezyo? (v.15-16)
- Niinzi cheeta lufu akutukwa? (v.17-18)
- Leza uyanda kuti tusale zili? (v.19)

Bala kuli Dut. 28:1-14.

- Niinzi chichitika kuti twalemeka milawu ya Leza?
- Eezi nzisystemezyo zyabuumi mbututazopone twazobuka kubafu naakuti buumi bwalino aanyika?

Bala kuli Dut. 28:15-19.

- Niinzi chichitika kuti teetwalemeka milawu ya Leza?

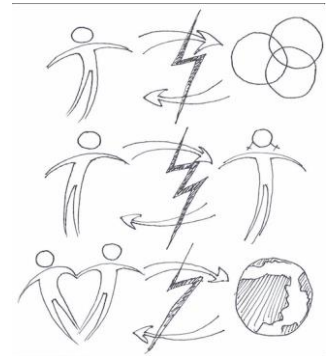
Leza wakapanga milawu myiingi itwaambila mbutweelede kupona. Kuli milawu iyeendelezwa buntu bwamuntu. Mukozyanisyo, “Toyelede kuchita bwaamu.” Alubo kuli milawu yakulengwa kwazintu iitupa nzila zyakubona buumi, mbuli kuti zuba lyomwe lilijisi mawola makkumi aabili aane nakuti chintu chabyalwa chiyanda maanzi kuti chikomene. Mukulemeka kwesu milawu ya Leza, tunoyobubona buumi bwesu kabusanduka. Tweelede kumvwisisiya milawu eeyi akwiibesya mubuumi bwesu. Mukuchita oobo Leza ulatulongezya.

Ndangemusule yabbuku lyakusanguna - 1

Amulange Poster 3 kubbuku lakusanguna -1, muchiiyo chakusanguna- 1.

- Mbulyidilano nzi butondezegwa amifanikisyo yoonse eeyi?
- Leza ulamilawu na yeendelezwa buliyidilano oobu? Njiili imwi njonga ulayeeya?

Leza ulaayo milawu yakuti tweelede kubweendelezwa biyeni buliyidilano boonse oobu. Wakatupa milawu iitugwasya kuti tuzwidilile mumabazu woonse aaya nikuba kuti takoyooba kaazuzikizigwa pe mane Jesu akaboole pesi eeledde kusumpuka.



Muchiiyo chayinda twakayiisya aatala a Kusanduka. Muleecho chiindi bantu bakali bachete, kunze biyo kwabache bavubi bakali aabulongo abakali mu bwami, pesi biingi bakali bachete kabali aanzala.

Mukati kamyaka myaanda yone yayinda kusandulwa kwakasika kunyika kwaku Europe. Kakusanguna bantu bakatalika kulibalila Bbayibbele lwabo. Tebakalikulinda kuti mupayizi azobaambile mbulyaamba Bbayibbele. Bakasanguna kwiiya milawu yabulengwe ayakulijata eeyo Leza njaakapanga munyika yoonse. Milawu eeyi, nichakeenda chiindi, yakasanguna kuyiisigwa twiingi munsondo amuzikolo. Mukuyiisya ooku bantu bakasanguna kusanduka – bakasanguna kupona buumi kabatobelezwa milawu mipya njibakali bayiiya. Mukozyanisyo, bakamvwisisiya kuti Leza wakati tubeleke chamanguzu mbuli tulikubelekela nguwe pepe bantu. (Efeso 6:7). Bakamvwisisiya lubo kuti twelede kupa akugwasyania.

Nibakalikusanduka, zyeengele zyabo zyakalikusanduka azilazyo. Kulya kwiingi kwaka pangwa alimwi kwakaba kwaabana kwiingi. Mpuli azyeengele yakasima alimwi bantu biingi bakasanguna kuya kuzikolo kuyoyiia kusumpukide. Nyika anyika ku bwiinganyika bwa Europe yakasanguna kuzwa mubuchete. Mukulemeka milawu ya Leza nyika zyakubwiinga nyika bwaku Europe yakasanguna kuba abuvubi busumpukide. Kukaka milawu ya Leza kweeta buchete. Naa katuyanda kuzwa mubuchete tweelede kusanguna kumvwisisiya milawu eeyi akwiitobelezwa.

Twakapegwa Bbayibbele lituyanhaalila milawu ya Leza yoonse. Tweelede kwiibikka mumabazu abuumi bwesu woonse. Takukkwene pe kuza biyo kuchikombelo munsondo. Leza uyanda kuti tumulemeke zyiindi zyoonse.

Kuti twachita oobo tunobona buumi bwesu kabusanduka. Eezi tazyaambi pe kuti buumi bwesu bunooli buuba. Na twalanga buumi bwa Pawulo, tulabona kuti wakali kukkala kalangana abuyumuyumu. Pesi Leza wakasyomezya kutulongezya kuti tweenda munzila zyakumulemeka. Alakwe Pawulo wakasika mpabotelwa akujana lukondo nikuba mumapenzi ngaakalikuswaana.

Kusandulwa kwa Fiji

Zyakutobelezya kulisikuzululai: Bbelesya makkaadi kuti waane Iwaano luli aatala aFiji.

Nimuswiilila Iwaano lutobela, amuyeeye kuti mibuzyo iitobela nga mulayisandula biyeni:

1. Nzezili zimwi nzila zyakabelesegwa abantu kuti basangune kulemeka Leza?
2. Nzezili zimwi nzila nzibakabona Leza kabalongezya aazyo?

Mifanikisyo ya Fiji

<p>1. Manjililo</p> 	<p>Fiji ninyika iijisi tusuwa tusika myaanda yotatwe amakumi aabili atubili - 322. Mbusena bubotu alimwi basikuswaya balaamali nyiingi bakkala kabayinka kuyobona masena mabotu muzyiindi zyakulyookezya. Mali nyiingi ijanika munyika eeyi izwa kuli basikuswaya. Nyika eeyi ilaabantu basika 850,000. Nchimpanzi chabantu aaba mbana Fiji mpawo chimwi chimpanzi mbana India.</p>
<p>2. Mapenzi ngibakabona</p> 	<p>Mumweezi wa Kaanda kaniini mumwaaka wa 2000, fulumende wakatolwa alimwi bapati ba fulumende bakajiswi kabalindidwe antobolo kwamazuba makumi musanu alamusanu alimwi, tebakalikukonzya kuchija pe. Mumugwagwa bantu bakalikufola kabalikujezana. Basilumamba bakalikulwisyana. Amusule lyakulekwa kwabapati bafulumende nyiika yakiinkila kunembo ankondo. Basikuswaya bakaleka kusika alimwi bantu bakakachilwa kuuzya zintu zyabo.</p>
<p>3. Nsondo zyakaboolaa aamwi</p> 	<p>Nsondo zyamu Fiji tezyakalikubelekela aamwi pe. Pesi zyakalikujiizyana azilikke. Pesi nsondo zyakazokubona kuti zyakeelede kuboolaa aamwi zikombele nyika. Nibakabamba muswaangano wakusanguna taakwe nibakasyoma pe kuti kulasika bantu, pesi ng'anda yakazula abapati bansondo. Bakabumba mbunga mpya yakalangide nsondo zyoonse yakalikutegwa ni Association of Christian Churches. Bakambawusi bakati muchiindi chayinda bakalikuliyeeya lwabo biyo. Pesi lino bakakubona kuti Leza abalongezye beelede kubelekela aantomwe.</p>
<p>4. Wakasyoma ooyo wakajisi chuuno cha Muzuluzi</p> 	<p>Muli Kunkumunamasamu mwaaka wa 2001, bana Kkilisito kuzwa munyika yoonse eeyi bakajatana kuti bakombele nyika yabo akuyiisyanika Bbayibbele. Nibakamana, ooyo wakajisi chuuno chamuzuluzi wanyika eeyo wakakomba. Wakakumbila Leza kuti amulekelele, amuzulwide akumutondezya nzila kuchitila kuti amutobele. Musule azeezyo wakazochipegwa buzwide chuuno chakuzulwida Fiji alimwi wakayanduula bamwi bakalibana Kkilisito kuti abeleke aabo mubuzuluzi.</p>

<p>5. Kubija akusiya kwajilo lyanyika eeyi</p> 	<p>Muzyiindi zyayinda Fiji yakazibinkene aabulozi akulya nyama yabantunyina. Kwategwa banoonga bati muntu aligonkweede nkuni zyakuti ayokwe. Bapati babalozi aabo, bategwa bakalikweenda aatala amabwe aapya kabatapyi pe. Pesi eezi zyakasiya kutukwa kupati muyeengele eezi. Bantu bakalikufwa biyo kaatakwe waziba cheetelezya.</p>
<p>6. Lwaano lwalimwi Gunzi</p>  	<p>Limwi gunzi lyakazibinkene akubyala minsamu ikola. Umwi mweenzinyina wamupati wakali kubyala minsamu eeyo wakachiswa. Wakayoowa kuti ulafwa. Bakamvwa aatala ayimwi nsondo mpawo bakamutola nkuko kuti akakombelwe. Wakapona mpawo wakasanduka wapa buumi bwakwe kuli Jesu. Bantu bamugunzi eelyo nibakamvwa zyakachitika abalabo bakatobelezya basanduka. Bakasanguna kubona kuti dyabbulosi wakali kubeena. Bakaleka bulozi boonse mubusena oobo. Ayoooy wakalikuma zikola wakaleka wasanduka waba muna Kkilisito. Lino 80-90% yabantu mugunzi eeli bakaba bana Kkilisito. Bapati bagunzi bakabotelwa pesi tezyakazulide pe. Bakasanguna kuswaanana kabakomba muchiindi chawola lyane kumachedo. Bakakumbila kulekelelwa alimwi bakakumbila Leza kuti azulule. Kwakanoonga lino aabo balikukkala kabachiswa, tebakachilikuchiswa pe, misamu yakatalikwe michelo yakatalika kuzyala michelo, alwizi lwakatalika kuba abaswi pesi chiindi bakali bache loko.</p>
<p>7. Kusandulwa kwa Ntolongo</p> 	<p>Aabo bakasyeezye kutola fulumende bakawaalwa muntolongo. Ntolongo akali masena aakatalikwe bulangizi pe. Pesi basinsondo bakasanguna kuswayila ntolongo. Kwakusanguna kwakali kuyumu. Bantu bakazisulide loko nsondo. Bakalikuyanda kuzilwisya. Teensi bakalilipedeleda pe kulekelela. Pesi Leza wakabasandula basungwa bakaba bana Kkilisito. Lino ulamvwa bantu kabalikwiimba akukomba muntolongo. Kwiinda kumbali aantolongo umvwaanga wiinda kumbali aansondo.</p>
<p>8. Kusanduka Kwiingi</p> 	<p>Mumadolopo, kwakaba lubo kusanduka kwiingi. Basinsondo banoonga kababungana kabakombela madolopo aabo. Bakakumbila lulekelelo anzila njibakali kujatana aayo muchiindi chayinda. Madolopo akasanguna kusanduka. Chiindi bantu tebakali kusekelelana pesi lino lwakaba lumwemwe muntu woonse. Kwakacheya kupangwa kwamilandu, buchete, abasikukumbila mumigwagwa bakacheya. Bana bachila kwiinka kuzikolo. Buvubi bwakasumpuka abasikuswaya balikuboola.</p>

9. Lwaano lwalimwi gunzi



Mulibumwi busena, taakwe nikwakali nswi pe kwamyaaka makumi musanu ayisanu nkaambbo kuli musamu wakali wanyonyoona maanzi. Kumbali aamulonga ooyo, tekwakali chakali kumena pe. Bantu boonse mugunzi eelyo bakaboola amwi akuzumina zibi zyabasikale babo akuleka bulozi. Bakakumbila Leza kuti abalekelele. Kwamazuba miingi bakalikusika kunembo Iya Leza kabalila. Awumwi wakeeta nzyakalikubelesya kubulozi bakazijeya. Aboobo Leza wakasilika maanzi aabo akasanguna kuzula baswi. Akumbali amulonga kwakasanguna kumena zintu bakalima nchelela.

Amubale aantoomwe 2 Makani 7:14.

- Nzeezili nzila bantu bakuli 2 Makani nzibakabweeda aazyo kuli Leza?
 - *Nsondo zyakabelekela aamwi*
 - *Nsondo zyakatalika kukomba antoomwe*
 - *Bantu bakakumbila lulekelelo lwazibi zyachiindi*
 - *Bakasowa zintu zyabo zyabulozi.*
- Leza wakachitayi bantu nibakaboola kuli nguwe? Nzeezili zimwi nzila Leza nzyakabalongeza aazyo mu Fiji?
 - *Muse wakatalikumena sokwe wakatalika kumena*
 - *Lwizi lwakaba abaswi*
 - *Zyakulya zizwa mulwizi zyakavula kwiinda chindi*
 - *Milandu yakacheya*
 - *Bana bakkala mumigwagwa bakacheya – bakasanguna kuya kuzikolo.*
 - *Bantu bakaba aalumwemwe*
 - *Basikuswaya bakaboola*
 - *Buvubi bwakasumpuka*

Leza wasikilika nyika yabo munzila zigambya.

- Leza nga ulazichita na eezi muchengele chenu?
- Niinzi cheelede kuchitwa abantu bamunsondo yesu katulangide 2 Makani antoomwe atwaano tuli muchiiyo eechi?

Kulilingula

Tola chiindi chakuyeeya aatala achimwi eechi.

- Ulikuchita biyeni mukuzuzikizya eezi zintu?
- Niinzi chimwi nchonga ulachita?

Mukati kazimwi ziiyo zitobela tunolanga bwiingi kumilawu ya Leza. Mpawo tulalanga kuti Satani utweena biyeni akweezya kutukkazika mubuchete.

Chiiyo chabili: Tweelede kuba Balangizi baBulengwe

Mpalamo mpati

1. Leza wakaambila muntu kuti atonge aatala, abeleke, akubamba bwaanze. Oku nkuba abulyidilano bubotu abwaanze.
2. Tweelede kubelesya nzila zyesu zyabusongo kuti tubambe/tulondole kabotu bwaanze, peepe kunyonyoona naa kutongwa abwaanze.

Zyakubelesya ziyandikana

1. zitondeezyo—makkaadi aabili na aatatu aakulengwa (makkadi kkumi lilamusanu aatutu anenguulwe)
2. Makkaadi aatakwe nchaalembedwe
3. Pepa lyamaanzi
4. Mucheka waku salazya maanzi
5. Pepa pati lyakulembela mabambe

Manjililo

Zyakutobelezwa kulisikizulul: *Bikka pepa lyamaanzi mukati kang'and pesi mulinga talikoonyonyoona zintu aawo maanzi naatanookunke, pesi bikka mpubatalibone basikwiiya bako. Lidonkole anyeleyi mpawo ulileke akunke maanzi nwatalika chiiyo. Chita kuti kabbanga nkwardonkola kakomene komene kuchitila kuti basikwiiya bafwambane kubona kuti kuti kuli zilikuchitika. Sanguna chiiyo mpawo umaninsye chitondeezyo eechi umwi nabona maanzi.*

Umwi nawamba kuti wabona maanzi alikukunka kuzwa mupepa baambile kuti taakwe nchokonzya kuchita pe. Pa mweenya kubayiyi kuti bazwe aamizeezo yakuti niinzi chinga chila chitwa. Na kaatakwe wafwambaana kupa muzeezo buzwa kuti, "Mpuchili na nchimunga mulachita?"

NJOOMO MUMBUNGA MPATI

- Niinzi chachitika?
- Mwayeeyanzi nindati, "Taakwe nchekonzya kuchita" kuti ndiimike kuzuza kwamaanzi?
- Nzeezili zintu zibi zyalikunochitika kaansinga tetwiimika maanzi kuti azwe?

Leza ulatwaambila muchibela chakusanguna cha Bbayibbele kuti tweelede kutonga – nakuti kuba bapati aatala azintu zyakwe nzyakalenga. Muchiiyo echi tuyanda kulangisisya munchali ooyu afwiifwi.

Lwaano

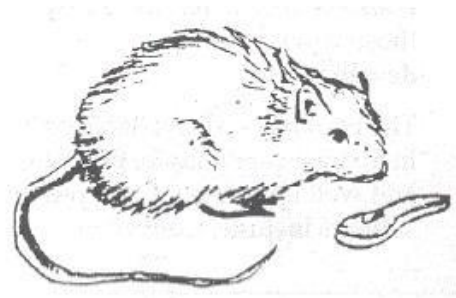
Zyakutobelezwa kulisikizulula: *Balila lwaano oolu bayiyi.*

Bantu bamusyobo wachi Pokomchi baku India mbaamwi babantu bachetel loko kuchilikiti cha Guatemala. Mumyaaka makumi aatatu ayinda bakambawusi bakasika kuzokambawuka akujula zikombelo. Bana Pokomchi biingi bakatambula Kkilisito, pesi zyeengele zyabo zyakakkede kazichili aabuchete. Bakachilikuzwa aakusanduka bakajisi chaamba chalusumpuko muchiindi chiboola pepe muchiindi echi nchibakali kupona. Musimpe bakalikulinda biyo kuti bafwe zwabo, kuchitila kuti basiye buchete bwabo bwaanyika bakaswaanane a Jesu kubuumi butamani kujulu.

Eezi zyakasanduka aawo Arturo, umwi mukambawusi wakachilikukomena naakasanguna kubelekela mubusena bwa Pokomchi. Wakasanguna kubeleka aabakambawusi bamu Pokomichi bakata yiide pe. Wakabayisya Bbayibbele kabotu kabotu. Wakanoonga nabayiisya Bbayibbele wakalikubapandulwida kuti kuli nzila Leza nzyatupede kuti tuchite aazyo ziyandisyo zyakwe akutobelezya milawu yakwe iilimu Bbayibbele mubuumi bwesu bwama zuba woose.

Penzi ndibakali aalyo boonse bantu bamu Pokomchi lyakali lyakubula matala akubikila zilyo nzibanooli batebula. Chiindi chiingi, balimi bamyuunda miniini bakalikulimina kuli lyida bakalikujana zilyo zintuloko, pesi nibatebula zyanoonga zyaligwa makoswe bana babo kaatanalya. Wakabuzya Arturo wati, “Ngwani uuchenjede, nywe nakuti makoswe?” Balimi bakali kuseka kabaamba kuti, “Makoswe.” Arturo wakabuzya, “Ndinywe mutonga makoswe naakuti makoswe ngaamutonga?” Balimi bakazumina kuti makoswe ngaakali kubatonga ampuli zyabo. Nkaambo akalikubweza chakulya chabo pesi taakwe wakali kwayimika pe. Makoswe ngaakali kuli yeeyela chakulya nchaakali kuyanda peepe bantu.

Mpawo, Arturo wakabatondezya kuti Leza ubapende manguzu akutongwa bwaanze. Wakabayeezya kuti Leza wakabalongezya abusongo nkaambo wakabaanza muchimo chakwe. Bakeelede babelesye busongo mbubakapegwa kuchitila kuti babelesye manguzu akutonga zilengwa kwiinda kuti zilengwa zibatonge.



Aba bana Pokomchi bakayeeya kuti batobelezye eezyo zibaambila Bbayibbele kuti batonge aatala amakoswe. Bakayaka matala akalikugwasya kujalila kunze makoswe. Nibakatalika kutabilila chakulya chabo kuzwa kumakoswe bakasanguna kujana chakulya chizulila mpuli zyabo.

NJOOMO MUMBUNGA MPATI

- Niinzi chakachitika mulwaano?
- Niinzi nchitunga tulayiya mulwaano olu? Ngazilachitika biyeni mulichenu cheengele?

Chiiyo cha Bbayibbele

NJOOMO MUMBUNGA MPATI

Bala kuli Matalikilo 1:26-28; Matalikilo 2:15, Nte 24:1.

- Nyika njiyani? (Ntembauzyo 24)
- Leza wakati muntu achite biyeni azilengwa zyakwe?
 - *Kuzitonga*
 - *Kuzibeleka*
 - *Kuzibamba*
- Chaamba nzi kuzibamba? Niinzi nchituchita kuti tubambe chintu? Nga tulazibamba biyeni zilengwa zya Leza?
 - *Nitubamba chintu, tulachitabilila akuchita kuti tachifwi naa kunyonyooka, chikozyanisyo nchakuleka kusowa sowa tombe nakunyonyona zilengwa. Tweelede kuchenjelela zintu zilimbuli kutemwa kwamisamu myiingi nkaambo zyeetelezya kukukulwa kwamuse.*
- Chaamba nzi kuzibeleka? Nga tulazichita biyeni?
 - *Nituzibeleka tuchita kuti zizyale chimwi chintu. Zilengwa zyeede kutupa chakulya abubotu, antoomwe akuzuzikizya ziyandisyo zyesu. Chikozyanisyo nchakuti tweelede kujana zyakuyasya maanda. Na katulima tulikuchita eezyo Leza nzyakatwaambila kuti tuchite. Tweelede kubotelwa nitulima nkaambo nkulemekea mulawu ya Leza.*
- Chambaanzi kutonga zilengwa (yeeya lwaano lwabana Pokomchi)

- *Kutonga chaamba kuba anguzu aatala achimwi chintu. Chikozyanisyo, mupepa lyamaanzi tulakonzya kwiimika kweenda kwawo - taatutongi pe maanzi. Tweelede kubelesya busongo bwesu kuti tutonge zilengwa. Chikozyanisyo, bbilichi lilatonga zilengwa. Kuti kaatakwe bbilichi, mulonga ngututonga kuti tweelede kweenda biyeni. Teensi nchiyandisyo cha Leza pe kuti tukkale katubaanga tulikweendelezegwa aazilengwa. Tweelede kukkala katukumbila Leza kuti atupe busongo bwakutonga aatala azilengwa.*

Aawo nitubamba akubeleka zilengwa, tulikulemeka milawu ya Leza njaakatupa. Ezi tuzyamba kuti nkuba abulyidilano bubotu a Leza. Pesi, nkaambo kakuwa, nziyumu eezi kwiinda aawo Leza nakasanguna kuzyaamba pesi uchiyanda kuti twiilemeke milawu yakwe eezi.

Bulyidilano Bubotu Azilengwa

NJOOMO MUTUBUNGA TUNIINI (TUBILI NA TUTATU)

Zyakutobelezya kulisikuzulula: Akamwi kabunga kape makkadi akubulengwe kuzwa kuli aayo ali mu zitondezzyo zijatika ubape aambi atakwe nchaalembedwe.

Amulangisisye limwi alimwi kkadi amufanikisyo walyo. Amwaalongele kayeendelana akuti ngaali atondezzya bulyidilano bubotu azilengwa aayayo aatatondezzyi bulyidilano bubotu. Mpawo amubelesye makkadi aatalembedwe mweenge zimbi zitondezzya zinga zilachitika muzyeengele.

MAJWI AKUZZA KUNJOOMO

NJOOMO MUMBUNGA MPATI

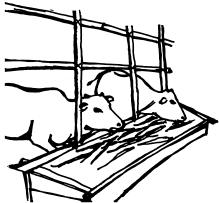


Zyakutobelezya kulisikuzulula: Nibamana kubeleka mutubunga koyabulanga nzibachita mumilimu yabo mumakkaadi.

- Tulazichita na eezi muzyeengele zyesu?
- Kuma kkaadi mabotu, tweelede kukkala katuzichita na ezi?
- Kumakkaadi mabi tweelede kuzileka na?
- Nga tulabuchita biyeni busandu oobu?

Nchito zyaluyando

Atusale mizeezo iibili na iitatu tuyeeye kuti nga tulazichita biyeni Nchito Zyaluyando eezi.

Makkaadi Abulengwe

Kutabilila Banyama	Maanzi Aasalala	Kubyala Chakulya
		
☺ Twakaambilwa kuti tubame kabotu banyama. Tweelede kubayakila zyaata zibotu zyakukkala kuchitila kuti tabeeti malwazi mumaanda mutukkala.	☺ Kusya zikala akubizya maanzi akubelesya zyeede mukusalazya maanzi kuti eelele kunywigwa katatuchisiyi.	☺ Tweelede kubyala chakulya nchituyanda. Eeli ndibbazu lyakubeleka nyika. Chilili njiimwi nzila igwasya kuti mpuli ibe aabulondozi bubotu.

Eli ndimwi bbazu lyakutonga zilengwa.		
Kulima 	Kuyaka Ng'anda 	Chimbuzi 
☺ Tweelede kulima bulongo Leza mbwaakatupa. Bweelede kupa kumpuli zyesu peepe kututonga. Tweelede kubikka nzila zyakutilizya akuchita kuti muse uvube kuchitila kuti upe chilyo chiingi.	☺ Tweelede kuba aabusena mputuyuba mvula azuba. Kuba amaanda mantuloko njiimwi nzila yakutonga zilengwa. Tatweelede kutongwa amvula azuba.	☺ Zimbuzi zichesya malwazi akubamba bwaanze bwesu kabusalede. Tweelede kubamba kabotu bwaanze bwesu kuchitila kuti tabutuchisyi.
Kuloba 	Kutema Misamu 	Tugeche Twamakoswe 
☺ Kuloba njiimwi nzila njitunga tulapa aayo chakulya kumpuli zyesu.	☺ Tweelede kuziba kuti nitutema misamu tweelede kubyala iimbi. Misamu nchipo kuzwa kuli Leza iitutabilila kuti takubi kukolomoka kwanyika. Kuti twatema misamu teetwabelesya bulongo oobo, bulanyonyooka chakufwambaana alimwi tazitugwasyi pe.	☺ Tugeche tutugwasya kuti tujate mabbede atulyida zilyo zyesu. Tatweelede pe kuyuma kutupanga tulakonezka kuchitwa aatusamu. Tweelede kutonga zilengwa peepe kuti makoswe atuchisye.
Zyakuteya Nzi 	Kuvika Chakulya kuti Tachikalwi Nzi 	Koona mutu Nsabwe 
☺ Zyakuteya eezi zigwasya kuti nzi zicheye. Twaambilwa kuti tutonge zilengwa aboobo kuselezya buvule bwa nzi ninzila njitunga tulachita oobo.	☺ Tweelede kutabilila mpuli zyesu kuzwa kumalwazi anyampulwa aanzi kwiinda mukuvumba chakulya chiindi choonse.	☺ Koona mutunsabwe kututabilila kumalwazi alimbuli malangezuba aamwi malwazi anyampulwa aamansenya.

<p>Tombe</p> 	<p>Chimpayuma/Muse Uutabeleseki</p> 	<p>Kusya Chikala</p> 
<p>☹ Leza wakatwaambila kuti tubambe bwaanze bwesu. Eezi zyaamba kuti tweeleda kubama bwaanze kabusalede kuchitila kuti bupe bulemu kuli Leza. Tatweelede kusowa sowa tombe aansi pesi tweeleda kubika mumalindi.</p>	<p>☹ Tweelede kubelesya bulongo naakuti zimpayuma zibe ulongo bubeleseka mukuchita nzila zyakutililizya akubikika manyowa.</p>	<p>☹ Zikala ninzila iitugwasya kujana maanzi alaansi ngitwakapegwa aLeza. Alimwi maanzi amuzikala alatugwasya kukkala abusanambi abulondozi.</p>
<p>Kubyala Zisyu /kulima chilili</p> 	<p>Banyama mumaanda</p> 	<p>Makoswe kulya Chakulya</p> 
<p>☺ Kulima zilili zyazisyu njiimwi nzila njitunga tulapa aayo chakulya kumpuli zyesu.</p>	<p>☹ Banyama tabeelede pe kuba aafwiifi achakulya chesu. Balijisi malwazi. Tweelede kweendelezya kabotu zivubwa zyesu akuziyakila zyaata.</p>	<p>☹ Makoswe alijisi mwalwazi alimwi alya chakulya chesu. Tweelede kutabilila chakulya chesu kuzwa kumakoswe akupanga tugeche tupa kuti acheye makoswe aaya.</p>

Ndange Musule

NJOOMO MUMBUNGA MPATI

Kuli zintu ziotatwe Matalikilo nzyatwaambila kuti tuchite mukutobela milawu ya Leza mukubamba zilengwa zyakwe.

1. Kuzibamba
2. Kuzibeleka
3. Kuzitonga

Ezi nzizaambwa nikwaambwa buliyidilano bubotu azilengwa. Mbulikuti twakalengwa muchiimo cha Leza, tulakonzya kubelesya busongo mukubamba bwaanze azilengwa. Tulakonzya lubo kukumbila Leza kuti atugwasye abusongo mbutuyanda.

Kulilingula

Njili nzila mpya njonga ulabelesya kubamba akutonga zilengwa mucheengele chenu mumviki iboola eeyi?

Chiiyo chatatu 3: Tulakonzya kusandula Iya Juunza

Mpalamo mpati

1. Leza taakwe nakatalide kuti tatusanduki pe. Ulijisi makaze mapati mubuumi bwesu kuti tusumpuke.
2. Tulakonzya kuba bantu beeta busandu kuli bamwi (mbuli Jesu abamuka Lee). Naba omwe muntu uutobela Leza chakusyomoka ulakonzya kugwasya dolopo lyoonse kuti talinyonyoonwi.

Zyakubelesya

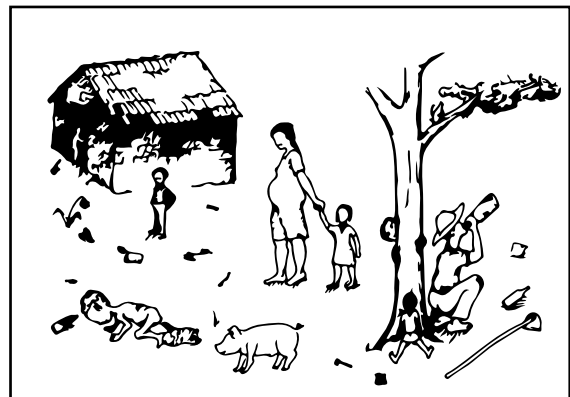
1. Zitondeezyo —Mufanikisyo wampuli iilikufwaba
2. Zitondeezyo —Mufanikisyo wa Jesu kali aadilwe – makkaadi musanu aatatu.
3. Zitondeezyo —Mufanikisyo wabamuka Lee – makkaadi aatatu.

Ntalisyo

NJOOMO MUMBUNGA MPATI

Zyakutobelezya kulisikuzulula: Tondeezya mufanikisyo wampuli iifwaba – mpawo ubuzye kubayii:

- Muyeeya kuti mpuli eeyi yali yasanduka na mumyeezi musanu awumwi yainda?
- Muyeeya kuti mpuli eeyi yasanduka na mumwaaka omwe wayinda?
- Muyeeya kuti mumweezi omwe uboola, mpuli eeyi inooli yasanduka na?
- Muyeeya kuti mumyeezi musanu awumwi iboola mpuli eeyi inooli yasanduka na?
- Muyeeya kuti mumwaaka omwe uboola mpuli eeyi inooli yasanduka na?



Na nsandulo zyabo kazili peepe kumibuzyo yoonse, buzya kuti nkaambo nzi? Kuti bati yii, buzya lubo kuti busandu oobu bulachitika biyeni?

Bala lubo mavesi muchiiyo chakusanguna – Dut 28:1-14.

- Mulizili nzila Leza nzyayanda kutulongeza aazyo?
- Mavesi aya alanjila na muchiimo chayeeyi mpuli?

Bala kuli Jeremia 29:11

- Ngaali mabambe Leza ngalawo aatala andiswe?
- Mavesi aaya alakonzya na kunjila muchiimo champuli ilimumufanikisyo oomu? Nkaambo nzi?

NJOOMO MUTUBUNGA TUNIINI

Amweenge mufanikisyo uumbi wampuli eeyi uutondezya mbayanda Leza kuti kiibede.

Kusandula zintu

NJOOMO MUMBUNGA MPATI

Zyakutobelezya kumweendelezyi: *twaambyo tuli muni toonse tuzibinkene loko – weelede kusala twaambyo tweendelana abusena bwana.*

“Chikoolo chikoolo mwanaansya watakozya kwawuso ulakozya kwanyoko.”

“Kabucha uleta tunji.”

“Chakulya chizulila chilakataazyi, pesi buvubi tabukataazyi pe.”

- Twaamba nzi twaambyo otu?
- Kulitumbi na twaambyo twaamba zikozyenie azezi ntozi?
- Ntootuli ntozuminana aato twaambyo ootu?
- Ntootuli twaambyo ootu ntoyeyi kuti tuli luzi kwiinda mubbayibbele?

Jeremiah 5:1

- Leza wakalikuyanduula bantu bangane?
- Niinzi chalikunochitika kaansinga wakajanika ooyi muntu?

Ezekiel 22:30

- Leza wakalikuyaandula bantu bangane?
- Niinzi chalikunochitika kaansinga wakamujana amuntu ooyo?
- Niinzi chalikunochitika kansika wakamubula muntu ooyo?

Kazitobela majwi amu Bbayibbele, nansya muntu waba omwe uutobela Leza chalusyomo ulakonzya kufutula chisi choonse kuzwa kukunyonyoonwa.

Kuba muntu uyeta busandu

NJOOMO MUMBUNGA MPATI

Bala muli Luka 7:11-17.

Oolu lwaano lwakachitika aawo Jesu abasikwiiya bakwe nibakaswaana muka mufu kudilwe lyamwana wakwe mulombe aawo nibakalikuyabuzwa kumulyango wadolopo. Basikwiiya baJesu aawa balikubotelwa nkaambo babona maleele. Mukamufu abasidilwe balikulila.

- Niinzi chakachitika mulwaano oolu?

Zyakuchita kulisikuzula: *belesesya makkaaadi alimusanu aatatu aJesu adilwe kuzwa kuzitondezyo ikuti kulangwe zintu zili musanu azitatu nzinga tulayiiya kuzwa kulwaano olu aatala amuntu weeta busandu.*

Kuli zintu zilimusanu azitatu nzyakachita Jesu kuti abe muntu wakeeta busandu. Atulange kuti nzeezili.

1. **Jesu wakamubona.** Kwakali bantu biingi bakabunganilide dilwe. Basikwiiya bakwe bakalibotedwe nkaambo kamaleele akakachitika. Pesi Jesu wakamubona kali aakati kadwi lyabantu. Kuti katuli bantu bayanda kweeta busandu tweelede kuba bantu babona bamwi. Tweelede kubona muntu kali aalikke peepe kubona dwi.
2. **“Moyo wakwe wakaya kulinguwe.”** Kuti katuyanda kweeta busandu, tweelede kufwida nsoni. Tweelede kuba bantu bamvwa luse nitubona bantu bayanda lugwasyo. Chiindi chiingi tulaleka kubona akuleka kuba aaluse. Niinzi nchituta muchiindi nitubona muntu uyanda lugwasyo mubukkale bwesu? Niinzi nchituchita kuti twabona mwanakazi wakasiigwa aamulumi kalikulela bana alike naakuti twabona syanene ulikulela bazikulu bakwe kali aalikke? Tulalumvwa na luse? Kumbila kuli Leza kuti akupe luyando lwiingi lwakuyanda cheengele chako. Mukumbile akutondezye bantu bamu cheengele munzila njababona we.

3. **Wakapa majwi akusungwaazya.** Chiindi chiingi bantu bayanda muntu ubapa majwi akusungwaazya. Takukwe bubi pe kugwasya muntu azintu zijatika, pesi chiindi chiingi muntu uuli mumapenzi uyanda lubo muntu uunga unoomupa majwi akumusungwaazya.
4. **Jesu wakajata bbokesi.** Jesu naakachita eechi wakachita chintu chakalikutondwa mutunsiyansiya twakwe. BaJuda bakali kusyoma kuti, kuti muntu wajata bbokesi lilechidumbu unooli wasofwaala. Jesu wakalipeda kuti asofwaale pesi kali wagwasya umwi muntu. Tweelede kulipeda kutola ntenda akunjila mutombe kuti tugwasye bamwi bantu. Bantu balakonzya kutwaambuula na kutazuminana anzitulikuchita pesi tweelede kuchita eezyo Leza nzyatwiitila kuti tuchite.
5. **Muli manguzu mujwi lya Leza amukukomba.** Jesu naakakomba muntu wakafwide wakabuka kubafu. Utanolubi kukomba mulichili achili chiimo nchobede. Tola chimwi chiindi chakukombela bantu. Chita oobo kolikusyoma kuli Leza kuti ulaleta kusanduka muziimo zyoonse akugwasya mulizyoonse ziyandikana. Yiisa bamwi bantu kukomba kuchitila kuti abalabo bayiiye akuziba manguzu aaLeza.
6. **Kwakaba mpindu.** Mulombe wakabuka kubafu. Tweelede kuba aampindu kumilimu yesu njituchita. Na koyanda kugwasya, sanguna amilimu miniini njokozya kuchita kiizwidilila. Kutu wazwidilila bantu biingi balaba aachiyandisyo alimwi balayanda kuti mugwasyanie. Mukweenda kwachiindi munooli mwaabukonzya kuchita zintu zipati.
7. **Jesu wakabweedezya mwana ooyu kulibanyina mpawo wakeenda.** Banyina mbibakali bakoloondo; alimwi bakalijisi bukamboni aatala aLeza mbubakalikuyanda kwaabila bamwi. Na twagwasya bantu, tatweelede pe kuti tube ndiswe tuyanda kuboneka. Amuleke muntu wagwasigwa ape nguwe bukamboni nalikwaambuula abeenzinyina aatala azyachitka. Zilabapa bulemu akukulemeka kwiinda kuti iwe nwagwasya kolikulidunda. Jesu wakeenda wabasiya kuti balyaambwide.
8. **Leza wakatembawulwa.** Kumamanino bulemu boonse bweelede kubweeda kuli Leza. Ba anchoonzyo kuti kumamanino azyo zyoonse Leza abe nguwe uutembawulwa.

Zyakutobelezya kulisikuzulula: Lingula lubo twaano twamuka Lee kuzwa ku bbuku lyakusanguna

Bamuka Lee mwanakazi uupona ukkala kunyika iili ku Asia. Uli aachiyandisyo chakugwasya bachete mucheengele chakwe, ikapati aabo batakwe milimu yakubeleka. Usanguna akuswayila mpuli eezi amweezi amwezii kayanduula nzila zyakubagwasya kuti bapone kabotu. Ntotu tumwi twatwaano tutatu tutondeezya mbaakabeleka kugwasya mpuli. **Ootu twaano ntwachoonzyo.**

Lwaano 1 – Muka. Lee achilili chamaluba

Mubusena bwakwe mwakali mpuli yakali aabuchete kabali aabana baili. Mulumi abakazi tebakali kubeleka pe. Bamuka Lee bakaleya kuti babalange. Bakajana kuti kwakali busena kunembo lyanga'nda yabo bwakali aamuse kabuli buniini zwabo. "Nimwatabyaala maluba aawa? Mulakonzya kubotya nga'anda yanu akuyowuzya kuzintoolo zilafwiifwi."

Mwanakazi wamuunzi awa wakazitobelezya eezyo alimwi wakanoonga kayinka kuyowuzya amwi maluba.

Wakazobona kuti basikuula bakalikuyanda misyobo

yaandeene yamaluba pesi nkaambo kakuti wakali aachilili chiniini takali kukonzya pe kubyala maluba miingi. Aboobo wakasanguna kuyowula maluba kulibamwi ngakali kuuzya antoomwe aakwe kamupa mpindu. Lino nakabona kuti waba abusena bwakuzizya wakayeya lubo kuti "Ndilakonzya kuuzya zimbi zintu awa!" Ulabuka chifumo fumo kuyakukoda mabanana ayimwi michelo njakali kuzizya abusena bwakwe bwamaluba.



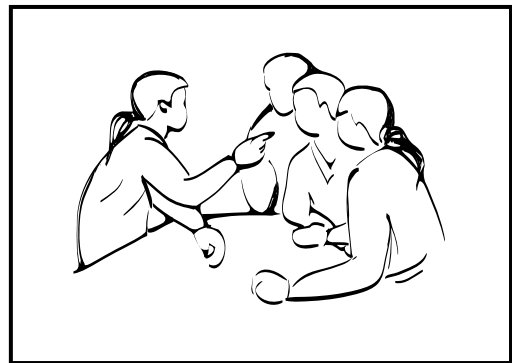
Lwaano 2 – Bamuka Lee amubbula

Imwi mpuli yakalikuyanda lugwasyo yakali kuyanda mulimu wakubeleka. Pesi taakwe nibakezi kuti bachite biyeni alimwii taakwe nibakali aaluzibo lwayimwi milimu. Bakali kubeleka tulimu tuniini twabuzuba abuzuba, pesi taakwe nibakalikukonzya kujana mulimu lubbe. Bamuka Lee bakazibona kuti eyi mpuli yakali kubeleka chamanguzu alimwi bakalikuyanda mulimu, aboobo bakaya kukuswayila imwi mpuli yamunsondo yakali kulima mubbula. Bakabuzya kuti kulima mubbula kwakali kubapa mpindu na, akuti kwakali kwakuuziza kuntuloko na alimwi muntu uyandaanzi kuti atalike kulima mubbula. Nibakamvwa kuti wakali mulimu mubotu, wakupndulwida mpuli eyi kuti Leza wakatwiita kuti tuyande basimabambanwa besu akugwsya bachete. Bakabuzya kuti aba bakalaangunukide na kuti bagwasye imwi mpuli ilabuchete yiyiye kulima mubbula. Bakazumina. Mpawawo ba Muka Lee bakapa kuti mpuli zybile ezi zizibane. Aba bakali bachete bakakondwa nibakamvwa kuti balakonzya kulichitila chimwi chintu. Bakafwambana bakuyandula chilili azimwi zyakalikuyandikana kuti basangune kubeleka. Kumamanino amwaaka bakajana mpindu bakonzya kubbadala mali yamuunda ambuto alimwi bakachaala ayimbi mali yalikukonzya kubagwasya kuya kunembo.



Lwaano 3 – Ba Muka Lee akuboozya aamwi mpuli

Impuli yatatu ba Muka Lee njibakali kuyanda kugwasya nimpuli yabana bakaanzanisigwa abazyali babo. Bazyali bakali kuyeeya kuti mpuli yabo taakwe nchiwamba alimwi taakwe chizwa mulinjiyo pe. Ba Muka Lee bakaswaanana abasimpuli eeyi mukweezya kubaboozya aamwi. Bakabasyomezya kuti banoswaanana chiindi chilingi akubagwasya kuti buumi bwabo busumpuke na kakuli kuti bazyali bazumina kuti mpuli yabo iboole aamwi bagwasyanie kusumpula buumi bwabo. Aboobo bazyali bakamusyoma lubo mwana wabo musankwa mpawo bazumina kumupa mali yachikwelete kuti asangune kwebo lyabutale busowedwe. Lino wachila chakuula zintu ziyanda kusowegwa zipangidwe aabutale kazyuuzizya chimwi chintoolo chichita zyakubambulula zintu. Lino wakakonzya kugwasya mpuli yakwe alimwi wachila chakulimvwa kalemekeka.



NJOOMO MUMBUNGA MPATI

- Balikubweeta biyeni busandu bamuka Lee?
- Walinawujana na mweenya wakuba mbuli bamuka Lee ayebo mulichako cheengele? Niinzi nchuwakachita?
- Muulizili nzila azintu bamuka Lee nzibakelesya kuba muntu weeta busandu mucheengele chabo mbuli mbaakachita Jesu kuli mukamufu wakali wafwidwa mwana?
 - *Wakabona bantu. Wakasala mpuli mpawo wasanguna kuziswayila.*
 - *Wakabafwida luzyalo. Ulaachiyandisyo chakubagwasya.*
 - *Ulabasungwaazya.*
 - *Ulalipeda kunjila muntenda mpawo ulalipeda lubo kubeleka chamanguzu. Tasungwaazyi amajwi aalike pesi ulayanduula nzila zyakubagwasya aazyo.*
 - *Nikuba kuti tazyambidwe mutwaano, pesi tuli achoonzyo kuti wakalikukomba.*
 - *Mpindu zyakabawo.*
 - *Wakasiya bantu kuti bayinkile kunembo. Bo bantu, peepe we, mbibakabeleka muzilili zyabo akuyoowuzya kuzisambalilo.*

- *Leza wakatembawulwa. Tazyambidwe pe mutwaano pesi bamwi bantu bakasanduka baba bana Kkilisito.*
- Nzeezili zyiyo nzitunga tulayiya kuzwa kuli bamuka Lee?
Zyakutobelezya kuli sikuzulula: *Wajana nsandulo kuzwa kumbunga bala eezi zilembedwe muni.*

Zyiyo nzitunga tulayiya kuzwa kuli ba Muka Lee:

- Tweelede kuba aamoyo wakugwasya bantu akukonzya kulipeda kutola chiindi
- Tweelede kutola mweeynya wakubumba bulyididlano abantu bamuzyeengele zyesu bayanda lugwasyo. Tweelede kubaswayila chiindi chiingi kuchitila kuti babe aachaamba mulindiswe.
- Tweelede kuswiilila antu. Bantu biingi balimumapenzi bayanda kubona kuti kuli bantu babayanda akubafwida luzyalo. Kutu babona kakuli bantu babafwida luzyalo balakonzya kusanguna kuswiilila kumajwi aakusungwazigwa ngibaambilwa. Tatweelede pe kuba bantu balakutongooka kulibamwi akubalangila aansi bantu bayanda lugwasyo. Kutu bantu bayeeya kuti ulikubangila aansi balayoowa kwaambula aayebo.
- Tweelede kupa mizeezo kutu tugwasye bantu babone zintu munzila isiyene njibanga balachita aayo zintu. Chiindi chiingi bantu tabazipe kuti bachite biyeni aatala abuumi bwabo. Bantu bachete muchiindi chiingi bayeeya kuti taakwe chimbi nchibakonzya kuchita kuti basandule buumi bwabo alimwi balafwaambaana kutakata mulizyakweezya kusandula buumi. Bayanda muntu uulipedeledede kubagwasya akweenda abo mukubappa mizeezo yakuti niinzi nchibanga balachita kulisandula mubuumi.
- Tweelede kulipeda kubeleka kuchitila kuzuzikizya mizeezo. Bamuka Lee bakawula mbuto zyakusanguna nzibakabyala antoomwe amwanakazi ngubakali kugwasya. Teensi bakayondowamba majwi biyo pe kuti achite biyeni. Bakayanduula muntu wakali aachiyandisyo chakuyiisya mpuli kubyala mubbula akubagwasya kuti bajane busena bwakulima. Mulwaano lwatatu bakayinka kumpuli bakwambuzyania aabo. Teensi bakalikuyondowambila bantu pe nzibeelede kuchita; bakalikunjila abalabo mukuchita eezyo zyakalikuyandikana kuchitwa kuti mpuli eezi zisanduke.
- Zumina kusangunina muni/kusanguna azintu ziniini. Teensi yoonse pe mizeezo ikonzya kufwaambana kweeta busandu mbuli lwaano olu. Mulichimwi chiindi tweelede kutobelezya ntaamo antaamo, buzuba abuzuba mukugwasya bantu. Utalangili kutu bantu boonse basanduke munzila ikozyania na chakufwambaana. Bape ntaamo zitali njumu zyakutobelezya zyakusanguna nzibakonzya kuzuzikizya abalabo balimvwe kabazwidilide. Kuzwiidilila kwabantu kuzintu ziniini kubapa mantukwe akuti bachite zipati.
- Busandu butola chiindi chilamfu. Ootu twaano tetwakachitika zuba lyomwe pe.

Kabunga Kagwasya

Chimwi chiindi zilayuma kuyeeya mizeezo yakugwasya bantu. Imwi nzila yakuti ugwasye bantu ulakonzya kubumba kakali kabunga kakwaabana mizeezo yakugwasyania. Aka kalakonzya kuba kabunga kabantu baswaanana lumwi amviki kabali aachiyandisyo chakugwasya bamwi. Balakonzya kunookomba antoomwe awumwi kakombela muntu ngwali kugwasya akwabana mizeezo yakuti ngabaleeta biyeni busandu muntabi nzibalengene aazyo. Kutu kabali aantoomwe kabunga aaka kalakonzya kwaabana mizeezo akuyeeya iimbi kwiinda kutu muntu omwe kalikuyeeya. Tamulubi kukumbila Leza kutu amupe busongo.

NJOOMO MUTUBUNGA TUNIINI

Muyeeye aatala amufanikisyo wampuli kumatalikilo achiiyo eechi. Atuyeeye zimwi nzila nzitunga tulabelesya kukwiigwasya kutu isanduke kuzwa kuchiimo chayoy ibe mpuli ilaabumi Leza mwayanda kwiibona kiibede.

Masimpilo

NJOOMO MUMBUNGA MPATI

Bala kuli Ntembawuzyo 139:14-17.

Chiindi chiingi nchuuba kusyoma kuti lyajilo lyesu lilakonzya kutondeka kuti lyajuunza linoyimvwi biyeni mubuumi. Na katuli bachete nkuuba kuyeeya kuti tuyooftwa katuli bachete; na mpuli yesu kiili yabalimi nga tuzi kuti toonse tunoli balimi. Nikubaboo, Leza ulamabambe aatala abuumi bwesu. Waakaanzwa busiyene alimwi ulijisi busongo azipo Leza nzyakupede kolimumpuli njiyeeyo njwakazyalwa mulinjiyo. Uyanda kubelesya zipo nzyakupede kuti weete busandu. Umwi awumi wenu ulakonzya kweeta busandu mulichimwi achimwi chiimo, mulaba mumpuli, kulibamwi bantu na mucheengele choonse. Leza ulakonzya kukutuma kuti weete busandu munsondo yako, muchilikiti nakuti munyika yoonse.

Kulilingula aku Chita

Yeesesya mpawo ukombe aatala amibuzyo yobile iiliminsi:

- Buumi bwako buli biyeni? Uyeeya kuti Leza ulakonzya kusandula buumi wako na? Komba kuti Leza akutondeeze nzila yakusandula buumi bwako alyajuunza lyako.
- Yeeya kuti taakwe na umwi muntu ngonga ulasanguna kugwasya. Ulayanda na kuba mukabunga kakugwasya?

Zyakutobelezya kulisikuzulula: ikabunga nikamana kukomba, kumbila aabo bayanda kuba mukabunga kakugwasya kuti uswaanane aabo mukayindi katobela. Bagwasye babe mutubunga twabantu bane kusika kuli bali musanu abatatu mpawo ubasungwaazye kuti babambe zuba lyakuswaanana. Bapandulwide kuti kumuswaangano wabo wakusanguna belede kuti awumwi asale muntu wakugwasya. Basangune kuswayila bantu aabo. Kumuswaangano wabili beelede kupa ngambo atala akutji kuswaya kwabo kwakeenda biyeni mpawo akwaabana mizeezo yakuti ngabalagwasya biyeni. Mbuli kabunga mukumbile Leza amupe busongo mpawo mubelesye busongo mbumunooli mwajana kuli Leza kuti muyeeye nzila zyakugwasya. Amuyeeye kuti mutachiti zintu zyoonse antoomwe. Amusangune azimwi ziniini zimukonzya kugwasya aazyo.

Chiiyo chane - 4: Leza Wakatupa Zyiingi

Mpalamo mpati

1. Amulange zyoonse nzyakatupa Leza
2. Zipego zyabulengwe zilimukati kesu nzikoloondo kwiinda zilikunze.

Zyakubelesya

1. Malembe amusobaano
2. Zitondeezyo zyamakkadi anengedwe akonzya kuba abili kuyosika kumusanu katondeezya zintu nzitupedwe (akamwi kabunga keelede kuba amakkadi 24)

Manjililo

MULIMU WAKUCHITA MUMBUNGA MPATI

Zyakuchita kulisikuzulula: Kunembo lyabayiyi kumbila mutu omwe abale malembe aatobela.

Musyomi uliikuba aachiindi chakwe chakukomba alimwi wabala kuli Matayo. 25: 14-30. Mpawo wasikuti,

“Ndisyuulizya kuti kansiinga ndaba mbuli ooyo wakapegwa zipo zilimusanu kuchitila kuti nkechitila Leza milimu mipati! Pesi ndafwida nsoni ooyo mubelesi wakapegwa chipo chomwe.... Ndiyeeya kuti Mwami wakamuyumisizya loko! Ma, nsizinjili peme nkaambo nsiboni pe kuti ndaacho chipo nchenga ndilabelesya kuti ndimubotezye Leza na kumubelekela. Atala azeezyo ndilimuchete zwangu!!!! Nchoozyo nchakuti nsikonzyi pe kugwasya uumwi muntu nkaambo me lwangu ndiyanda lugwasyo lupati. OMwami ndigwasye undipe ambebo zipo ziche zyakubelesya...”

- Niinzi nchuwabona mumusobano ooyu?
- Wakatyeni musyomi muchete ooyu?
- Ndisimpe na ndyalikwaamba aatala abuumi bwakwe?
- Nkaambo nzi naakayeya oobo?

Chiiyo cha Bbayibbele

NJOOMO MUTUBUNGA TUNIINI

Bala kuli Mateyo 25:14-30

Minchali 16-18

- Babelesi bakazibelesya biyeni zipo zyabo?
- Kujana walyeezyanisya na ababelesi bakabelesya zipo zyabo nakuti amubelesi uutakwe nchaakachita?

Minchali 19-23

- Wakachitaanzi mwani ng’anda naakaboola?
- Wakatyeni kuli aabo bakali baba azipo zyiingi?

Minchali 24-28

- Ndeelili penzi ndyakaba aalyo ooyo wakasisa chipo chakwe?
- Mwani ng’anda wakatyeni kuli nguwe?
- Uyeeya kuti nkaambo nzi basyomi biingi nibatabelesyi zipo zyabo?
- Tweelede kuchita biyeni?

KUBOOZYA NGAMBO

Kuleka kujatilila kukulilizya kwesu

MULIMU WAKUCHITA MUMBUNGA MPATI – MUSOBANO

Zyakutobelezya kulisikuzulula: Kumbila balipeda bali musanu. Chita kuti umwi awumwi abale majwi akulilizya aazibinkene.

Muchembele = “Bamayoo, kaansinga ndachili muniini. Ndalikunoli aamanguzu aakubeelekela Leza azipo zyangu. Lino ndakacheembala akukkala nkekatede.”

Uchikomana = “Amu, kaansinga ndimupati. Ndalikunoyeta busandu bupati kwiinda mukuzulwida bantu kuti bakombe Leza nkebelsya zipo zyangu. Lino nkuyumu loko nkaambo ndimuniini.”

Simabbizimusi = “Kaansinga ndaachiindi. Ndijisinkini loko amilimu yangu zyakuti nsikwe chiindi chakugwasya bamwi.”

Muntu uutayiide = “Kaansinga ndiyiide. Taakwe nchezi pe aatala azyiyo zya Leza. Mukambawusi nguwe alike uunga ulagwasya bantu nkaambo wakaya kuchikolo chakuyiila bu Kambawusi alimwi wakayiisigwa.”

Muntu muchete = “Kaansinga ndilamali. Ndalikunomubelekela loko Leza. Ndimuchete loko kwalino zyakuti nsikonzyi kugwasya uumbi muntu kunze kwangu.”

NJOOMO MUTUBUNGA TUNIINI

- Nkookuli kulilizya nkwaakali wabelesya mubuumi bwako?
- Nkookuli kulilizya nkonga wamvwa kuzwa kuli bamwi bantu bamunsondo yenu?
- Nkookuli kulilizya kwakapegwa amubelesi wakasisa chipo chakwe? Kulilizya ooku kwakatambulika na kumupati?
- Muyeeya kuti kulilizya kwesu kulatambulika na kuli Leza?
- Nga tulachitaanzi kuti tumane kulilalila kwesu?

Tweelede Kusanguna Kubona Zyoonse Nzyatupede Leza

NJOOMO MUMBUNGA MPATI

Chiindi chiingi tuswiilizya kumanwa a Saatani mpawo twasyoma kuti taakwe nchituli aacho. Tulalyeezyanisya abamwi mpawo tulanga biyo nzitutakwe pe. Sunu tulalanga lubo tubone eezyo nzyatupede Leza.

Kuti zigwasye kuyeeya kabotu, tulalanga zintu zitatu. – Bulengwe – mukati; bulengwe – kunze; Zyamuuuya.

1. **Bulengwe – Mukati** chaamba zipo zyoonse azintu nzitukonzya kuchita nzyatupede Leza. Chitondeezyo: kukonzya kwaambuula, kukonzya kusala, kukonzya kujika chakulya, kukonzya kudukula mulilo.....
2. **Bulengwe – Kunze** chaamba zintu zyoonse nzimupedwe aaLeza mucheengele chenu. Mbuli, maanzi, bulongo, zuba, zikolo, azimwi zyiingi.
3. **Zyamuuuya** chaamba zintu nzitulaazyo nkaambo kabulyidilano mbutulaabo aLeza. Muli maleele, nkombo amanguzu aaLeza azimwi.

Zyakutobelezya kusikuzulula: Chita kuti balikwiya bamvwisisisye musiyano uuli aakati kamabazu aatatu aaya kabatana chita umbi mulimu uutobela.

MULIMU WAKUCHITA MUTUBUNGA TUNIINI

Zyakuchita kulisikuzulula: pambuula bayiyyi aba babe mutubunga mpawo ubape zitondeezyo zyakubelesya – makkadi

Akamwi kabunga keelede:

Kubungania makkaadi abe tubunga tobile:

1. Zintu nzimuli aazyo mucheengele

2. Zintu zimutakwe mucheengele

- Amuyeeyee zintu zilimusanu nzimuli aazyo mucheengele. Amuzilembe aakkadi. (Bayeeyee kuti balange akuyeeya zimpanzi zitatu zyazintu zyakubelesya nzibazuwa kujulu.) Akamwi kabunga kaba azintu nkikalemba na amakkadi nkikabungania aalembdwe kuti “tatukwe”?

Nikuba nchuba kumvwa aanga tatukwe, simpe ndyakuti Leza wakatulongezya. Wakatupa zintu zyiingi. Kwiinda kuyondoyeeya nzitutakwe, tweelede kubelesya nzyatupede kale Leza.

Bala lubo Mateyo 25:20-23.

- Niinzi chichitika kuti twabelesya zintu nzyatupede Leza?
- Tulikubelesya na zyoonse Leza nzyakatupa?
- Ngatulasumpuka biyeni kuti twabelesya zyoonse nzyatupede Leza?

Balimi

NJOOMO MUMBUNGA MPATI

Mfunkununo yakatondeezya kuti zipo zyamukati nzitulaazyo nzikoloondo kwiinda zilikonze. Mbuli bana Kkilisito tulakubona alubo kuti zipo zyamuyya nzikoloondo loko nkaambo zilapa kuyungizya eeyo zyabulengwe.

Bala lwaano lutobela:

Kunyiak ya Constanza, kasuwa kali ku Caribbea, kasuwa aaka kalijisi muse uuvubide. Kuli maanzi miingi alimwi bwiime bwakunze mbubotu kukulima.

Niyakamana nkondo yamanyika yabili (World War Two), bana Japan bakalikuchija buyumuyumu munyika yabo bakachijila kubusena oobu. Nibakasika taakwe nchibakali aacho pe biyo zizwaato nzibakazweete. Bakakkala abantu mbibakajana bakali bankukoko alimwi bakalima aabo mumyuunda. Tubunga tobile ootu twakali aabuchete alimwi bakalikuyuminwa akupona. Musule lyamyaaka makumi aabili, balimi bakali bana Japan bakali baba bavubi. Kakuliboobo, bantu bamunyika eeyo bakachili bachete alimwi bakachili kufwaba mukulima zilyo zibazulila.



- Zyakachitika biyeni eezi?
- Niinzi chakachitika?

Tubunga twamisyobo yabantu tubili ootu twakalijisi zyakubelesya zikozyenie – zilikonze. Chakalikusiya yakali mizeezo yabo. Bana Japan basyoma kuti weelede kukkala kobelaka chamanguzu, nikuba zintu kaziya kweelede kubeleka chamanguzu. Balimi bamubusena oobo bakalikusyoma kuti buumi bwaabo taakwe nibwalikuyoosanduka pe. Bakalikusyoma kuti, mbulikuti bamayisi bakali bachete, abalabo bayoofwa kabali bachete. Nizyakali kunoonga zyayuma zintu taakwe chimbi nchibakali kuchita pe nkaambo bakalibuzya kuti mbobwakaba buumi bwabo.

- Nkukoloondo byeni kuyeeya kwabantu? Kuyeeya kuli muchimpanzi chili chazintu nzitupedwe?
- Niinzi nchitunga tulayiya kuzwa kulwaano oolu?
- Niinzi nchitweelede kuchita busiyene nzitwiiya mulwaano oolu?

Zyakuchita kuli sikuzulula: Gwasya balikwiiya kuti bamvwisisisye kuti myuunda yakalikulimwa yakali iimwi. Chakasiyana mizeezo alusyomo. Bana Japana tabakwe nibakali aazimbi zintu zyakubelesya zyakunze pesi bakali anzizeezyo zyakali abantu mibakajana. Tulakonzya lubo kuba azibotu zyabulengwe bwamukati na twabelesya jwi lya Leza mukusumpula kuyeeya kwesu alusyomo.

Chiiyo 5: Satani Mubeji

Mpalamo mpati

1. Satani ulabeja nansya aatala alusyomo lwesu luniini kuli nzituchita zilimbuli milimu njitubeleka, busichaamba, buntu, akulengwa kwazintu, azimwi. – Manwa aakwe atukazika mubuchete.
2. Mbuli bana Kkilisito, tweelede kuziba simpe nkaambo simpe ndilitwaangununa.
3. Leza wakatwiita kuti tuzulwide nyika, zibikka antoomwe kweeta simpe kumabazu woonse abuumi.

Zyakubelesya

1. Zitondeezyo – Makkadi amanwa - 8

Manjililo

NJOOMO MUMBUNGA MPATI

Bala kuli Johani 8:44.

- Ooyu munchali umupandulula biyeni satani?
- Ngaali amwi manwa satani ngakonzya kwaamba?
- Alaturjata na muli lyasunu manwa aaSatani?

Satani ngowisi wamabejo. Kuzwa kumatalikilo wakali kubeja ambulisunu uchibeja. Uyanda kuti tube bachete balaanzala, ulizi kuti twatobela milawu ya Leza tulalongezegwa aLeza. Eezyo tazyandi pe kuti zichitike nchatubejela.

Nguuli musyobo wamanwa Satani ngatubejela?

NJOOMO MUMBUNGA MPATI

Satani ulatubejela munzila nyiingi. Sunu tuyanda kulanga amwi mabejo ngatwaambila aayo atukkazika katuli bachete.

Zyakutobelezwa kuli sikuzulula: amulange makkaadi amanwa aalimunsu woonse. Chita kuti balikwiya bamvwwisisisye manwa aaya. Jana bwiima kulanga simpe lya Leza.

Mabejo ngawamba Satani

Kubeleka nkutukwa alimwi nkulemu. Kweelede biyo kubeleka buniini.



Simpe lya Leza

Twakaanzilwa kubeleka. Adamu wakalikubeleka nakaanzwa aLeza kuwa kakutanasika. Mbulemu bwesu kubeleka alimwi njenzila njitunga tulalumbayiza Leza anjiyo.

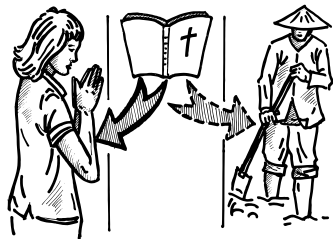
Twakazyalwa katuli bachete alimwi tuzoofwa katuli bachete.



Leza ulatulongezya kuti katumutobela akumuswiilila.

<p>Tulibachete loko chakuti tatweelede kupa bamwi, ndiswe tweelede kupegwa.</p> 	<p>Abalabo aabo bachete loko tabachaali pe kukupa bamwi. Muli Malaki Leza waambila bantu kuti tabalongezegwi nkaambo tababiki Leza kunembo pe. Waambila bantu kuti abamweezye babone zitachitike kuti basanguna kupa mbuli mbaakalayilila. Tweelde katuzi Leza wakatupa zyoonse alimwi ulayanda lubo kutupa zimbi nzituyanda.</p>
<p>Leza uyanda biyo zintu zyamuyya azilike.</p> 	<p>Leza ulalanga mabazu woonse abuumi. Zintu zyakaanzana muchiindi chakuwa pesi Leza uyanda kuti zijatane lubo kumabazu woonse tubweede kulinguwe.</p>
<p>Leza uyanda biyo kuti katuyobukambawukila basimayakilane besu katutalangi pe kuti</p>  <p>mubuumi bayandaanzi zijatika.</p>	<p>Leza wakaatwammbila kuti tuyande simayakilane wesu. Aawo mpapandulula mpongo ambelele utuyeezya kuti luyando nkupa kulya, maanzi aakukkala. Naakabuzigwa kuti simayakilane wesu ngwani, Jesu wakalungulula lwaano lwamu Samaliya mubotu nakaswaana mutuba wikalichisede munzila mpawo wakamugwasya kuti asilikwe.</p>
<p>Tatukonzyi kusandula buumi bwesu katutakwe nitwagwasigwa amali kuzwa kulibamwi.</p> 	<p>Leza wakatulongezya kale. Tweelede kujula menso esu kuti tubone zyoonse Leza nzyatupede mpawo tusangune kuzibelesya. Mpawo tubelesye eezyo Leza nzyatupede kuti tulongezye bamwi mpawo We ulatulongezya. Muchiiyo chakusanguna twaambula aatala aba muka Lee aabo bakagwasya bantu akubapa mizeezo biyo.</p>
<p>Bamwi bantu bali aabuumi buli mbubo kwiinda bamwi.</p> 	<p>Toonse twakaanza muchikozyanisyo cha Leza alimwi Leza ulatuyanda umwi awumwi mbuli mbaakatuyanda akutuma mwana wakwe kuti azootufwide. Taakwe bantu bali aajuulu na bali aansu mu Bwami bwa Leza. Umwi awumwi wakamwaanza muchiimo nchayanda kuti tube, alimwi awumwi muntu ulanchayeleda mubube bwakwe.</p>

Majwi aamu Bbayibbele alanga biyo bwiime bwazamuuya.



Jesu wakafwa kuti ajatanie mabazu woonse aabuumi pepe zyamuuya luzutu.

- Yeeya lubo amwi mabejo obile Satani ngakkala katwaambila? Alembe kumakkaadi aabili atalembedwe chintu.

Zyakutobelezya kuli sikuzulula: Mpayo, yanzaala makkadi woonse aans, (naa kwaanamatika kubulambo) mpawo waambile balikwiya kuti babike (matu, tusamu, nyangu na ku kubikka mpaa aapepa) alilimwi alimwi bejo ndibasyoma.

NJOOMO MUTUBUNGA TUNIINI

Mulapegwa mabejo aabili aakuti muyeeseesye kuti simpe Iya Leza nga lilatyeni.

NGAMBO

Niinzi cheetelezegwa amabejo aaya?

NJOOMO MUMBUNGA MPATI

Mabejo a Satani alazyiingi nzyaakonzya kweetelezya mukati kabuumi bwesu.

Bala Iwaano lutobela:

Busena bupati munyika ya Izilayeli ninkanda. Pesi, kulichintu chigambya aatala ankanda eeyi. Amwi masena taakwe masokwe – aayo masena taakwe nchaalacho alimwi mayumu nchwa. Amwi lubo masena ankanda eeyi alaamasaka. Aayo mabazu alaamasaka alijisi misamu yamichelo alimwi kulamena maluba azimwi zyiingi zyuuzizigwa kumanyika mayingi. Nkaambonzi nikujanika lusaka kumbali aankanda? Bantu bakkede munkanda mba Arab. Basyoma kuti Leza wabo (Allah) wakayituka nyika yabo. Taakwe chimwi chintu nchibachita nkaambo bo baamba kuti mbukweelede kuba. Bamwi bantu bakkede mubusena oobo mbaJuda, bayeeya kuti oobu mbobusena mbubakasyomezegwa aLeza, busena bukunka buchi amakupa, nyika njibakasyomezegwa mu Bbayibbele. Basyoma kuti Bbayibbele libaambila kuti beelede kubelesye nyika akwiitonga akwiibeleka. Aboobo bakatalika kubelesya busongo bwabo kuti bayaanduule mizeezo yakumana penzi lyakubulika kwamaanzi. Bakajana nsandulo mpawo bakabyala minsamu. Leza wakalongezya milimu yabo alimwi lino zyakavula kwiinda nzibakasanguna aazyo.

- Bama Arab abama Juda basiyene aali?
- Nguuli musiyano akati kazintu zyakali kumena munyika yabama Araba azyakalikumena munyika yabama Juda?

Zyakutobelezya kuli sikuzulula: gwasya balikwiya kuti bamvwisisisye kuti bama Arab bakasyoma manwa aSatani aboobo nyika yabo taakwe nchiilaacho pe. BaJuda bakasyoma simpe Iya Leza aboobo bakaba azyiingi zyakuti zimwi bachila kuuziza kunze kwanyika.

Amulange lubo alimwi kkadi. Akumwi akumwi kubeja amulange kuti niinzi busiyano bunga bulabawo aakato kamuntu uusyoma kumanwa awoyo uusyoma kusimpe Iya Leza. Mukozyanisyo, chakusanguna – kubeleka

nkutukwa. Kuti muntu kasyoma kuti kubeleka kulitukidwe taakwe nanga ulabeleka chamanguzu pe. Aajana biyo kulya kuzulila zuba lyomwe ulaleka kubeleka. Taakwe nabotelwa mukubeleka pe unokkede kayanduula nzila zyakuti tabeleki pe. Pesi, kuti muntu kasyoma kuti kubeleka kweeta bulemu antoomwe anzila yakulemeka Leza aboobo ulabeleka chamanguzu. Mukubeleka kwakwe chamanguzu ulajana butebuzi bwiingi. Balakonzya kulondola nansya muzyiindi zybuiyumu, alimwi tafwaambani pe kutakata.

NJOOMO MUTUBUNGA TUNIINI

Amulange kumwi akumwi kubeja mulange kuti kweetelezyayi.

NGAMBO

Amulange kuti mboobuli busandu bunga bulabawo mucheengele chenu naa bantu basyoma simpe balekana aamabejo.

- Cheengele chenu chinosumpukide naape?
- Cheengele chenu chinooli mbuli mbayanda na Leza naakuti pe?

Katuli antoomwe, atutole chiindi chakukomba kuti Leza agwisye manguzu aamanwa mukati kabukkale bwesu mpawo achite kuti bantu basyome simpe Lyakwe.

Nga tulagwisya biyeni manwa aaya?

NJOOMO MUMBUNGA MPATI

Bala kuli Jon 8:31-32 *kuli bama Juda bakamusyoma, Jesu wakati, "Na kamujatisisya njiisyo zyangu, muli basikwiiya bangu banchoonzyo. ³² Muyoliziba simpe , alimwi simpe liyomwaangununa."*

- Tuliziba biyeni simpe?
- Simpe lituchita biyeni? (Litwaangununa kuzwa kunyamaanzi?)

Na katuyanda kwaangunuka kuzwa kumanwa a Satani aboobo tuyanda simpe lizwa kuli Leza. Leza wakasyomezya kutumina bana Kkilisito "Muuya wanchoonzyo uyootuzulwida mukumvwisisya koonse" (Jowani 16:13). Komba kuti Leza akakutondezye simpe mpawo ulipe chiindi chakubala Bbayibbele kuchitila kuti umvwisisye simpe Iya Leza. Kumbila Leza kuti akugwasye umvwisisye Bbayibbele antoomwe asimpe lyakwe.

Chiiyo chamusanu akamwi - 6: Kulanga Ziyandikana

Mpalamo mpati

1. Kupa majwi aatala azyeengele
2. Kugwasya kuti kabunga kabone nzila nzinga zila belessegwa kuti cheengele chabo chisanduke.
3. Kugwasya kusanguna muzeezo akuchita eecho chinga chileeta busandu mucheengele.

Zyakubelesya

1. Pepa pati litalembedwe chintu
2. Ma kkaadi aatalembedwe chintu

Manjililo

NJOOMO MUMBUNGA MPATI

Ntaamo iitobela mukweeta busandu mucheelengele chesu, tweeleda kulangisisya cheengele chesu akubona kuti ngaali mapenzi ngituli aawo akuti niinzi chooma nchitunga tulachita kuti twaamane mapenzi aaya.

Zyakutobelezya kulisiku zulula: (sala mali niini yapepa ijanika munyika yenu – izibinkene kumuntu woonse. Chita kuti mibuzyo iiliminsi yeendelane aatala amali izibinkene kumuntu woonse ngoliku yiisya). Ambila balikwiiya kuti basandule mibuzyo eeyi iitobela.

Tuyanda kusobaana musobano muniini ooyu: (baambile kuti ujisi malii nzi.)

1. Mweelwe 1000 uboneka tungane amali eeyi?
2. Mabala ati “one thousand” alaboneka na amali eyi?
3. Myeelwe iitegwa **serial number** ilaali?
4. Ilembedwe aamubala nzi myeelwe eeyo?
5. Munyama musyobo nzi ulikusule kwamali?
6. Ulikuchita nzi munyama ooyo?
7. Mbangane bantu baboneka kusule lyamali?
8. Atyeni mabala aaboneka kusule kakuli kujulu kwamali?
9. Mubala nzi wampa iilikuchimweensi kusule lyamali?

Chimwi chiindi ngatwazibila chintu zyakuti anga tatuchichiboni pe. Mpalamo yaziyiyo ziche zitobela njakuti tubone cheengele chesu lubo mpawo tulanguule kuti nga tulagwasya biyeni.

Mpuli

CHAKUCHITA MUMBUNGA MPATI

Amweenge ma bbokesi aatatu apepa pati. Mwaalemba kuti muchete loko, muchete amuvubi. Muli limwi alimwi bbokesi amupandulule mpuli yeendelana akuba mubbokesi eelyo. Baambile kuti balange zintu zilimbuli

- | | |
|--------------------|---------------|
| • Musyobo wamaanda | • zyakuzwaata |
| • chakulya | • lwiiyo |
| • zivubwa | • mulimu |
| • bulongo | |

Nibamaninsya, babuzye baambe kuti bayeeyela kuti bantu bamucheengele chabo mbangane banga balanjala mulimwi alimwi bbokesi.

Mukozyanisyo:

Muvubi	Muchete	Muchete loko
Ng'anda mbotu, chakulya chiingi azyakuzwaata. Bala chiipekupeku, mudududu, bala DVD, ng'ombe, masofa. Balaachakulya chizulila kujika tutatu abuzuba kabala aanyama. Bana tabakwe nzala nibaya kuchikolo.	Bali ang'anda pesi tiikwe chintu mukati. Bali aakulya kuzulila kujika lumwi abuzuba. Zizwaato ziche. Basunsya matu aamubbula.	Ng'anda yaamba kuwa. Balya lumwi abuzuba kabasunsya munyo. Taakwe chimbi nchibanga balasunsya.

Cheengele

CHAKUCHITA MUMBUNGA MPATI NAA NIINI

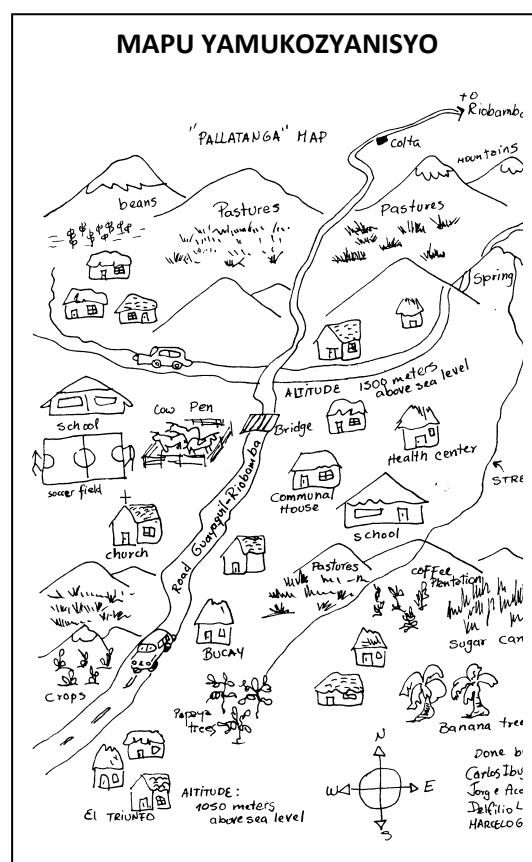
Zyakutobelezya kuli sikuzulula: Chita kuti balikwiiya boonse babelekele antoomwe kuti babumbe mapu yagunzi lyabo.

Na kolikuyiisya bantu bazwa kumagunzi asiyene, chita kuti babungane mbuli mbubazwa kumagunzi aabo. Kutu koli aabantu biinda musanu awumwi baanzaanye babe tubunga tubili.

Nikwamana kupanga mapu, chita kuti balikwiiya babikke mpaa azitobela:

- bantu nkubateka maanzi aakunywa
- Zikolo, zibbadela, zisambalilo, zintoolo azimwi.
- Kujanika masena akukombela makoloondo.
- Bantu nkubajana nkuni zyakujisya
- Migwagwa mipati, azimwi.
- Masena akusobanina

Bamana kweenga mamapu chita kuti babikke aantoomwe kuchitila kuti kulangwe zikozyania azisiyana. Na kabazwa mucheengele chimwi balakonzya ku kwaabana mizeezo yanzibanoli baluba.



Bamana kweenga aaya mamapu, chita kuti beenge aambi atondeezya mbubayanda kubona mbuchinobede cheengele chabo mumaaka kkumi iiboola. Babuzye kuti niinzi nchibayungizya kumapu akuti nkaambo nzi nibachita oobo. Niinzi chasiyana kuzwa ku mapu yakusanguna? Lemba aansi zyoonse zisiyene kupepa lilamutwe wamakani wakuti Community Key Changes mumalembe aako angambo zyachiiyo.

Kukomezya mabambe

CHAKUCHITA MUMBUNGA MPATI NA NIINI

- Yeeya aatala abusandu mboyanda kubona mumpuli. Lemba alimwi kkadi.

2. Yungizya zimwi zyasanduka kuzwa ku mapu yacheengele mpawo uzilembe amakkadi. Bikka antoomwe makkadi. Buzya balikwiiya kuti baalange babone naa kwaba kusanduka kuliwo nkubalikuyanda kubikka pesi bakuluba kukulemba.
3. Bamba makkadi woonse aaya waabikke muzibunga zitatu ziti: zikoloondo loko, zikoloondo, zitali zikoloondo loko.
 - Makkadi makoloondo loko bikka mpaa zitatu kukkaadi alimwi.
 - Aayo makoloondo bikka mpa zibili.
 - Aayo makkadi atali makoloondo loko bikka mpaa yomwe.
4. Bikka lubo makkadi aaya antoomwe mpawo wambile balikwiiya kuti babikke antoomwe kabalanga kuti ndeelili penzi guba kukulimana: muzimpanzi zitatu ziti, ndiguba, lilakati aakati, ndijumu.
 - Kumakkadi alamapenzi mawuba bikka mpaa zyoatatwe
 - Aali aakati aakati bikka mpaa zyobile
 - Mpawo kumayumu bikka mpaa yomwe.
5. Yaanduula makkadi aajisi mpaa zilimusanu ayimwi (naa musanu kuti kwabulika zilimusanu ayimwi.) aayo ngema kkadi makoloondo alimwi kali ngawo mawuba kukubeleka.
6. Kumakkadi makolo amusale lyomwe ndimuyanda kusanguna kubeleka.

Amutole chiindi chakukomba nimulikujala mukumbile Leza kuti amugwasye kumulimu wenu. Na chiindi kachichizumina ambila kabunga aaka kuti kabambile Nchito Yaluyando iitobela.